

INSTRUCTION
BOOKLET

MORTAL KOMBAT SHAOLIN MONKS

BOOKLET

MORTAL KOMBAT SHAOLIN MONKS



<http://www.replacementdocs.com>

WARNING

Precautions

• This disc contains software for the PlayStation®2 computer entertainment system. Never use this disc on any other system, as it could damage it. • This disc conforms to PlayStation®2 specifications for the PAL market only. It cannot be used on other specification versions of PlayStation®2. • Read the PlayStation®2 Instruction Manual carefully to ensure correct usage. • When inserting this disc in the PlayStation®2 always place it with the required playback side facing down. • When handling the disc, do not touch the surface. Hold it by the edge. • Keep the disc clean and free of scratches. Should the surface become dirty, wipe it gently with a soft dry cloth. • Do not leave the disc near heat sources or in direct sunlight or excessive moisture. • Do not use an irregularly shaped disc, a cracked or warped disc, or one that has been repaired with adhesives, as it could lead to malfunction.

Health Warning

For your health, be sure to take a break of about 15 minutes during every hour of play. Avoid playing when tired or suffering from lack of sleep. Always play in a well-lit room, sitting as far from the screen as the cord will allow. Some people experience epileptic seizures when viewing flashing lights or patterns in our daily environment. These people may experience seizures while watching TV pictures or playing video games. Even players who have never had any seizures may nonetheless have an undetected epileptic condition. Consult your doctor before playing video games if you have an epileptic condition or immediately should you experience any of the following symptoms during play: dizziness, altered vision, muscle twitching, other involuntary movements, loss of awareness of your surroundings, mental confusion, and / or convulsions.

PIRACY

The unauthorised reproduction of all or any game part of this product and the unauthorised use of registered trademarks are likely to constitute a criminal offence. PIRACY harms Consumers as well as legitimate Developers, Publishers and Retailers. If you suspect this game product is an unauthorised copy, or have any other information about pirate product, please call your local Customer Service number given at the back of this Manual.

See back page of this manual for Customer Service Numbers.

SLES-53524-ANZ

1 or 2 Players • Memory Card (8MB) (for PlayStation®2) : 272KB minimum • Analog Control Compatible: analog sticks only
• Vibration Function Compatible

Mortal Kombat™, ShaoLin Monks™ © 2005 Midway Amusement Games, LLC. MORTAL KOMBAT, the dragon logo, MIDWAY, and the Midway logo are registered trademarks of Midway Amusement Games, LLC. MORTAL KOMBAT, ShaoLin Monks, the M in a circle logo and all character names are trademarks of Midway Amusement Games, LLC. Used by permission. Havok.com™ © Copyright 1999-2004 Havok.com Inc. or its licensors. All Rights Reserved. See www.havok.com for details. Midway Amusement Games, LLC and its affiliates do not monitor, endorse or accept responsibility for the content of any non-Midway website. Distributed under license by Midway Games Ltd. Midway Amusement Games, LLC and its affiliates do not monitor, endorse or accept responsibility for the content of any non-Midway website. Library programs © 1997-2005 Sony Computer Entertainment Inc. exclusively licensed to Sony Computer Entertainment Europe. FOR HOME USE ONLY. Unauthorised copying, adaptation, rental, lending, distribution, extraction, re-sale, arcade use, charging for use, broadcast, public performance and internet, cable or any telecommunications transmission, access or use of this product or any trademark or copyright work that forms part of this product are prohibited. Published by Midway Games Ltd. Developed by Paradox.

TABLE OF KONTENTS

Getting Started	3
Starting Up	4
The Story	5
Main Menu	6 - 7
Kontrols	8 - 9
Character/Arena Select	10
Single Player HUD	11
Versus HUD	12
Liu Kang	13
Kung Lao	14
Kombat	15 - 16
Non-Kombat Abilities	17 - 18
Character Health	19
Kombat Weapons	20
Kombat Weapons/Fatalities	21
Experience System	22
Pick-Up Items/Abilities	23
Versus Records	24
Kredits	25 - 28
Warranty	29
Customer Service	30

GETTING STARTED

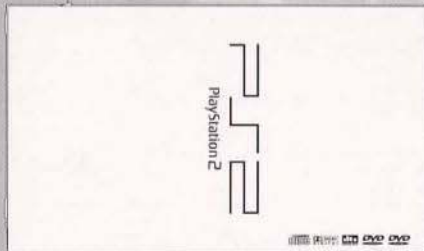
Set up your PlayStation®2 computer entertainment system according to the instructions in its Instruction Manual. Attach game controllers and other accessories, as appropriate. Make sure the MAIN POWER switch (located on the back of the console) is turned ON. Press the /RESET button.

When the indicator lights up green, press the button and the disc tray will open. Place the "Mortal Kombat™; Shaolin Monks™" disc on the disc tray with the label side facing up. Press the button again and the disc tray will close. Follow on-screen instructions and refer to this manual for information on using the software.

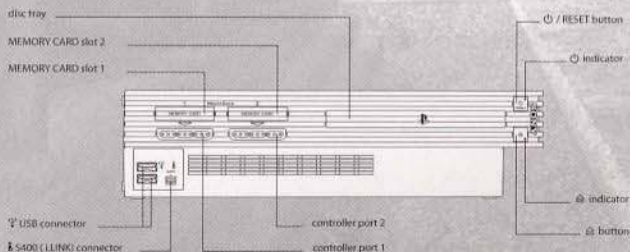
It is advised that you do not insert or remove any accessories once the power is on. Please ensure you have enough free space on your Memory Card (8MB) (for PlayStation®2) and have it inserted in MEMORY CARD slot 1 before starting play.

PlayStation®2 (top down view)

MAIN POWER switch



PlayStation®2 (front panel)

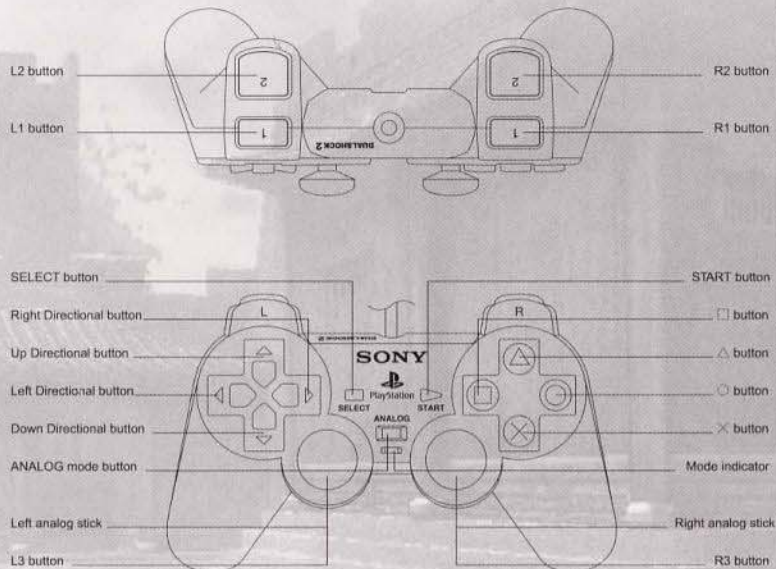


MENU/SUB-MENU NAVIGATION

Throughout this manual, , , and will signify pressing Up, Down, Left and Right on the directional buttons. To navigate through the game menus (i.e. Options), use the directional buttons (, , or depending on the menu) to highlight a selection.

STARTING UP

Analog Controller (DUALSHOCK®2)



NOTE: This title only supports the use of the Analog Controller (DUALSHOCK®2).

QUITTING A GAME IN PROGRESS

During the game, press the START button to display the Pause Menu. Press the directional buttons to select **Exit Game**, then press the button. To confirm exiting the game, highlight **Yes**, then press the button again.

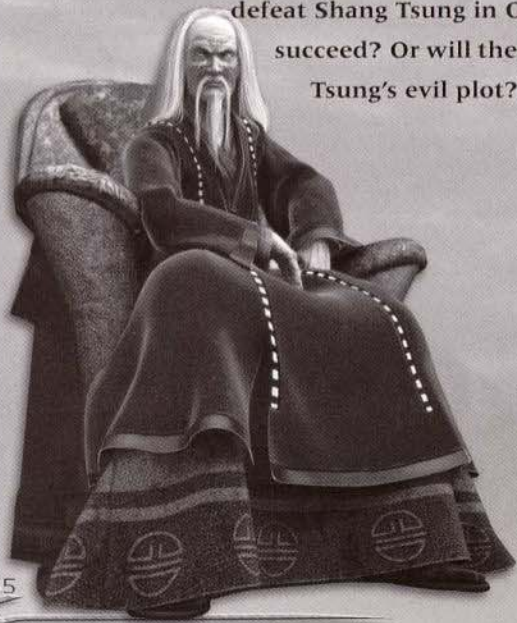
SAVING PROGRESS

Mortal Kombat: Shaolin Monks uses an autosave feature that saves to your memory card (8MB) (for PlayStation®2). When you start the game for the first time, the game will look for a Mortal Kombat: Shaolin Monks file. If it doesn't find a file, it will prompt you to create a file. Once created, the game will load the file the next time you play the game. Unlockables and options can be saved every time you exit the game.

THE STORY

In the final battle of the first Mortal Kombat tournament, Liu Kang defeated Shang Tsung and saved Earthrealm from domination. But in the confusion of a mysterious earthquake, Shang Tsung and his fellow conspirators escaped through a portal to Outworld. Kung Lao, who had been posing as a Masked Guard, helped his fellow Shaolin Monk escape the crumbling island. Liu Kang and his allies narrowly escaped with their lives.

When they returned home, the Wu Shi Academy was invaded by Baraka and his Tarkatan horde in an attempt to defy the rules of Mortal Kombat and take Earthrealm by force. Although the Shaolin Monks fended off the invasion, Raiden sensed a deeper conspiracy and urged the Shaolin Monks to defeat Shang Tsung in Outworld. Will they succeed? Or will they succumb to Shang Tsung's evil plot?



MAIN MENU

SINGLE PLAYER

Select Single Player to begin a one-player adventure.

KO-OP

Select Ko-op to play with a friend. Each player takes control of one of the heroes. As you advance through the game, you'll work as a team to defeat your enemies.

VERSUS MODE

Select this option to play against a friend (or enemy). You'll go right to the Character Select Screen (see [Character/Arena Select](#), pg. 10). After you've selected a character, you'll square off against each other in one of the various arenas in the game.

LOAD GAME

You can use this option to access the memory card (8MB) (for PlayStation®2) and load a previously saved game. This option will read the memory card (8MB) (for PlayStation®2) and automatically load the game data. You will be prompted if no loadable game data is found.

Note: If a memory card (8MB) (for PlayStation®2) that included a saved game is inserted after you boot up, you'll need to use this option to load your saved game.

OPTIONS

Brightness

Use this option to adjust the game's brightness levels. Read on-screen instructions to make the adjustments.

Controller

This option allows you to study the controller layout.

Audio

Press the directional buttons ◀ or ▶ to make volume adjustments to Music, Sound Effects and Speech.

Mode - You can also select from Stereo, Mono or Surround Digital sound modes, depending on your television's capabilities.



MAIN MENU

Gameplay

For Versus Mode, you can make adjustments to a few gameplay options.

VS Rounds - You can decide how many rounds you'll need to win in order to determine the winner of a match. Choose **1** or **3** rounds.

VS Match Time - You can set the timer limit to **120** or **180** seconds, or you can set it to **Infinity** to play without a time limit.

Camera Control - Choose between **Normal** and **Inverted** Camera Control.

KONTENT

Note: The following may not be available right away, but they can be unlocked as you progress through the game.

Arenas

See Arena images and stories that are unlocked as you progress through the game.

Concept Art

View an array of Mortal Kombat: Shaolin Monks concept art. Not all images will be available right away, but you can unlock images as you progress in the game.

Movies

The Mortal Kombat: Shaolin Monks game includes a selection of movies. Not all movies will be available right away, but you can unlock them as you progress in the game.

Photos

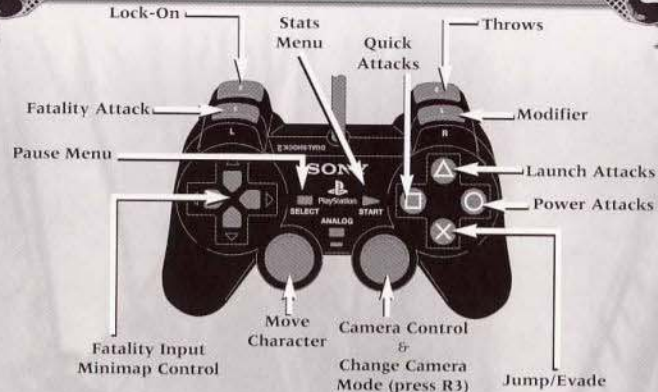
View some Mortal Kombat: Shaolin Monks photos. Not all images will be available right away, but you can unlock photos as you progress in the game.

Kredits

See those who worked day and night to bring you Mortal Kombat: Shaolin Monks.



KONTROLS



Basic Movement and Navigation

The left analog stick controls all basic movement. It also defaults to basic walking and running movements. The Walk Speed increases or decreases depending on the left analog stick's distance from neutral. When used in conjunction with other buttons or scenarios, the left analog stick can control other more advanced navigation duties.

Camera Control

Pressing the R3 button toggles three different camera modes: **Normal**, **Close** and **Panoramic**. In Normal mode, use the right analog stick to look around.

Jumping

Pressing the \times button in any style or mode will execute a basic jump. Jumping and using the left analog stick will allow the player some limited control of the path that the jump takes, even after the player has left the ground. (For other Jumping controls, see **Non-Kombat Abilities**, pg. 17-18).

Kombat Controls – Without Weapon

Quick Attack

Pressing the \square button will perform a basic low power/fast executing strike. These attacks do the least amount of damage, but they're the fastest in execution and recovery.

Launch

Pressing the \triangle button will perform a basic medium power/medium speed attack that will launch an opponent into the air. If already in the air, this attack will "re-launch" the character even higher.

Power

Pressing the \circ button will perform a high power/slow executing attack. Power attacks normally ground or knock-back an opponent if contacted.

KONTROLS

Grapple

Pressing the **R2** button will activate the throw/grapple attack. This button also doubles as the weapon pick-up/throw button.

Enemy Manipulation

Hold the **R1** button and press the **R2** button to grab an opponent. You can then take control and use them as a human shield and perform attacks. You can later upgrade the manipulation abilities and gain more attacks out of manipulation.

Special Attacks

Holding the **R1** button along with one of the three attack buttons will execute the Special Attack associated with that button. The Special Attacks maintain the properties of their parent button for ease of understanding (all **R1** + **△** attacks will launch an opponent, all **R1** + **⊕** attacks are fast, low damage attacks that hit multiple times, etc.)

Blocking

If you hold **L2** button (Lock-On), you will block any incoming attacks. When you block, you'll lose some of your energy meter. If you have no energy available, your block will be broken.

Lock-On

Pressing the **L2** button will lock the player's point of view on the closest enemy the character is facing. Using the left analog stick while Lock-On is activated will allow the player to strafe left and right without diverting his attention from this main adversary. The main character will circle the opponent a set distance while strafing in this way. Use the right analog stick to change focus to a different enemy.

Evades

Holding the **L2** button while pressing the **×** button will allow the player to perform an evade in any direction, dependent upon the left analog stick input.

Multi-Directional Attacking

This system allows you to attack in any direction at any time, freely linking any move into any other move. Once an attack has been thrown, the system will take over. Pressing the left analog stick in any direction (while continuing the flow of attacks) will attack in that direction without changing the player's orientation. This allows the player to instantly attack an enemy in a full 360-degree area around the main character.

Fatality Attack

The **L1** button and the directional buttons are used in conjunction to input Fatality Motions. See **Fatalities** (pg. 21), **Kombat** (pgs. 15-16) and **Non-Kombat Abilities** (pgs. 17-18) for more gameplay details.

CHARACTER/ARENA SELECT



At the Character Select screen, highlight an available fighter, then press the **×** button to make a selection. Player 1 selects using the blue highlight, Player 2 selects using red. To randomly select a fighter, press the **⊙** button.

The Character Select screen is different for Versus and Single Player mode. This screen shot represents Versus mode, having more characters available than Single Player mode.



At the Arena Select screen, highlight an available arena, then press the **×** button to make a selection. To randomly select an Arena, press the **⊙** button.

Stats Menu

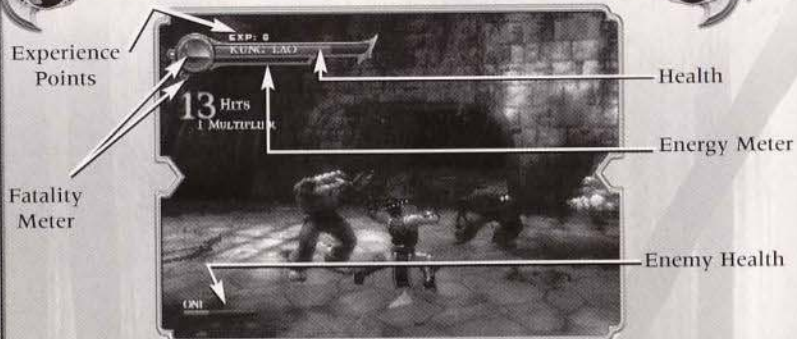


The Stats menu lets you browse through a collection of stats accumulated as your adventure progresses. On-screen instructions show you how to browse through the different screens.

You can also use your collected Experience Points to purchase Specials and Kombos (see **Experience System**, pg. 22).

The Moves screen allows you to view the various moves you've acquired as you progress.

SINGLE PLAYER HUD



Health Meter

In Single Player and Versus mode, the **Health Meter** in the upper portion of the screen measures a warrior's diminishing Health. The meter begins each round reflecting Health at 100%, but the amount of Health is reduced with each blow taken. The reduction amount depends on the type of attack and whether or not it was blocked.

Energy Meter

Press the **B1** button to use your energy and perform a Special Move. Special Moves are available once you fill your Special Move meter. Once used, the meter will diminish as you perform special moves, blocking, long jumps and evades. It will then recharge.

Fatality Meter

The Fatality Meter is an on-screen indicator that stores the ability to perform three levels of Fatalities: **Fatality**, **Multality** and **Brutality**.

The meter has these three levels of charge. As each level is filled, a more powerful set of Fatalities becomes available.

Each Level of Fatality affects a different number of opponents, starting with one opponent being killed on the Fatality level. The Multality level will let you kill multiple enemies around you, while the Brutality level will put you in a Rage mode and kill as many enemies as possible in a certain amount of time.

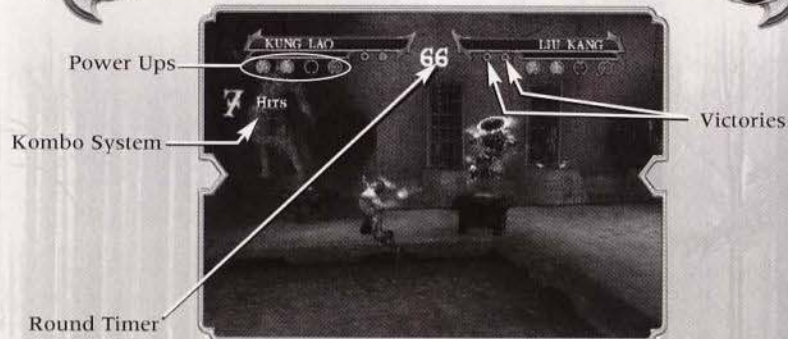
Enemy Health Meter

As you battle an enemy or Boss, their Health Meter will appear near the bottom of the screen.

Experience Points

These points are gained by killing enemies. Once acquired, you can use the points to purchase upgrades from the Stats Menu (see pg. 10).

VERSUS HUD



Health and **Special Move** meters appear the same as described on the previous page. The Versus HUD includes **Power Up** and **Victory Markers**.

Round Timer

By default, each round has a **Round Timer**. If the time is up before either komatant has been defeated, the warrior with fewer injuries is declared the victor. The winner takes the match and moves on to the next opponent.

Victory Markers

Each time a fighter wins a round, a **Victory Marker** is earned. The first fighter to earn two (in the default setting) wins the match and is declared the victor.

Power-Ups

As you find Power Ups, they'll appear within the Power-Up markers. They'll appear until you use them. You can hang on to as many as 4 different Power Ups. Power-Ups are automatically used for a limited amount of time.

Kombo System (Single Player Also)

When playing in Single Player and Versus mode, the Kombo System is an on-screen visual display of attacks that have been performed in a kombo. The benefit of the Kombo System is not only to show feedback to the player but to also act as the primary impetus for Fatalities. If an enemy is contacted while there is still time on the meter, the meter will refresh and the kombo will continue.

For more information on the **Kombo System**, see pg. 16.

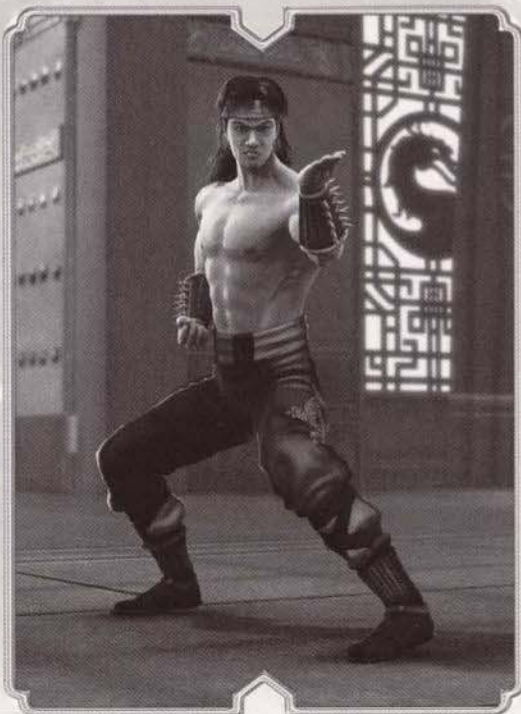
LIU KANG

Formerly with the White Lotus Society, Liu Kang earned the right to represent the Shaolin in the Mortal Kombat tournament. The thunder god Raiden knew that Shang Tsung's forces could not be overthrown by a lone warrior and helped Liu Kang to forge an alliance with other competitors. With their aid, he defeated the sorcerer and saved Earthrealm from domination.

Fighting Styles

Having been trained in the Shaolin Temples, Liu Kang utilizes styles of Shaolin Animal Kung Fu and Jeet Kun Do. Liu Kang generally prefers to fight hand to hand, though he does possess the ability to focus fire into various weapons, usually projectiles, as well as take the form of a dragon.

Attack Type	Attack Style
Quick	Jeet Kun Do
Launch	Monkey
Power	Choy Lay Fut
Grapple	Dragon



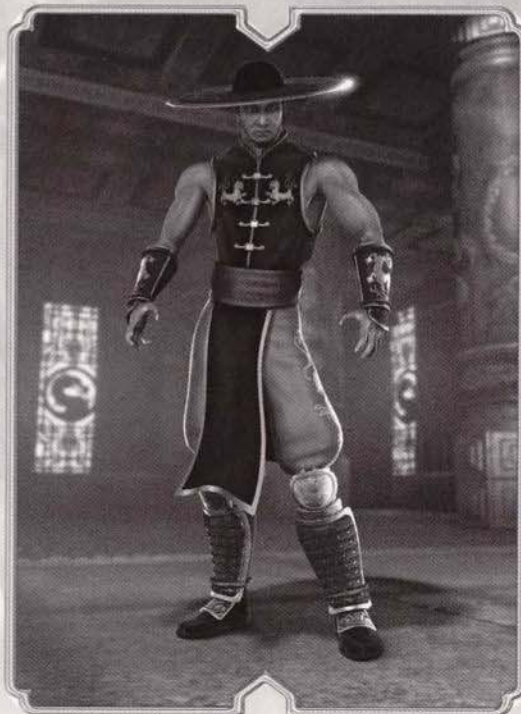
KUNG LAO

The Mortal Kombat tournament was Kung Lao's only opportunity to bring honor to his fallen ancestors. But when he did not receive the approval of the Shaolin to represent them, he disguised himself as a Masked Guard and waited for his moment to strike at the sorcerer Shang Tsung. During the final battle, Kung Lao joined Liu Kang and his newfound allies as they did battle against the forces of evil.

Fighting Styles

Kung Lao shares a similar background as Liu Kang, but his fighting styles are quite different. Kung Lao not only utilizes deadly striking arts such as Mantis and Shaolin Fist, but is also fond of using his bladed hat to slice his enemies.

Attack Type	Attack Style
Quick	Praying Mantis
Launch	Chinese Kempo
Power	Shaolin Fist
Grapple	White Lotus



KOMBAT

ATTACK STYLE

All of the attacks of the main characters are built around an **Attack Style** system. Each Attack Style corresponds to a particular attack button, which then represents a particular combat property. All attacks or moves coming from a button follows the properties of its main attribute, making the acquisition of any new attacks or upgrades very easy to pick up.

For example, the **△** button represents the Launch Attack. All attacks or abilities that come from this button will in some way launch the enemy into the air on a successful attack.

The main characters each have their own unique Attack Styles that are derived from their individual personalities.



Style/Property List

Quick Attacks

All of these attacks are fast, low damage strikes. Special attacks from this attack type will normally hit multiple times or execute extremely quickly.

Launch Attacks

All attacks from the character's Launch Attack will pop-up an enemy into the air for juggle kombos.

Power Attacks

All Power Attacks are slow attacks of great power. Generally Power Attacks are single attacks or small strings of slow attacks.

Throw/Grapple Attacks

This attack category contains any attack that throws or holds an opponent.

Get-Up Attacks

Get-Ups allow a player to recover quickly from a knockdown and rise with an attack. Press any attack button while on the ground to perform this attack.

Ground Techs

Press the **⊗** button while you're on the ground to perform a Ground Tech.

Air Techs

Air Techs are mid-air recovery moves. Press the **⊗** button while in the air to perform this move.

KOMBAT

KOMBO SYSTEM

String Kombos

String kombos are sequences of attacks linked together on a series of attack button inputs. They're present in most types of combat. In addition to single direction String Kombos, String Kombos can be created by utilizing the multi-directional attack system. For example, when surrounded, attacks can be strung together by attacking with one attack to the left, one to the right and two to the front.



Sequence Kombos

A Sequence Kombo is a pre-planned kombo built between attack button presses to often perform unique animations, effects and or properties. This adds special properties or unique reactions specific to this type of kombo. This includes setting an enemy on fire, popping the enemy into the air (higher than normal) or hurling an enemy away with greater force. It can also cause the player to automatically follow the enemy into the air after a launch attack, making Air Kombo a breeze. If you perform certain Sequence Kombos, you'll often find Kill Strike attacks. These attacks are often buried 2-3 hits into a Sequence Kombo to visually reward you when you perform them correctly.

Juggle Kombos

A Juggle Kombo is a series of hits levied on an airborne opponent that has been "launched" or "popped up" by the main character's attack. Juggle kombos can be mixed between attack buttons just like String Kombos. Anytime an enemy is in the air, the main character can attempt to juggle him with almost any attack.

Kill Strikes

Certain attacks act as **Kill Strikes**. If a Kill Strike lands on an enemy, a special Kill Reaction will be triggered.

Body Splits

Body Splits cause the body to break into pieces through attacks or background hazards.

Evades

Evades allow you to be resistant to damage as you avoid attacks and pressure.

Air Combat

You can toss an enemy into the air and then jump into the air to continue your kombo. You can throw them away, or toss them back down to the ground.

NON-KOMBAT ABILITIES

Ledge Grab

The Ledge Grab is available by default and allows you to grab onto and hang from a ledge. This helps in difficult platforming areas. You can hang for any amount of time and then flip up to the ledge you're hanging from. The flip places you in an air state, allowing all air-based abilities to be used (useful for attacking enemies standing on the ledge).



The following Non-Kombat abilities must be acquired as you progress through the game:

Wall Jump

When acquired, you can leap off of walls in the background to either reach extremely high levels or to set up an attack. This ability is very useful when in a narrow, chimney-like area that is too high to navigate. The Wall Jump is activated by pressing the **X** button when near a wall.

Wall Climb

You can dig into many solid objects and climb in 8 directions when this ability is gained. This is especially effective when combined with the other navigation abilities described in this section. Climbable walls are visually different from the surrounding wall textures. Simply contacting a climbable surface will trigger this ability. Pressing the **X** button will allow you to leap from the wall to levy an attack on foes below or to leap from climbable surface to climbable surface.



NON-KOMBAT ABILITIES

Wall Run

The Wall Run allows you the limited ability to run along vertical or horizontal surfaces for several feet before returning to the ground. Press the **R1** button when pushing into a wall to perform the Wall Run. If you press straight toward the wall, you'll wall run up. If you press at an angle, you'll run along the wall.



Swing

If you come in contact with a limb, pole, or other small platform, you can grab it with one hand and swing around. Releasing at the right moment will allow you to flip up to higher areas or to levy an attack on an opponent. Once you're swinging, press the **X** button to release.

Long Jump

The Long Jump is a low jump that travels a great horizontal distance. This jump is useful for clearing very wide ravines or pits. Press the **R1** button + **X** button to perform a Long Jump.

Double Jump

The Double Jump adds an extra jump height on top of the current Jump. This can be used to allow access to a new area that is too high to traverse to with the normal Jump. The Double Jump also resets the air state, allowing bigger and better combos to become possible. Press the **X** button, then press it again while you're in the air.

Fist of Ruin

When this attribute is obtained, the "power" style of each character gains the ability to destroy huge background objects, such as boulders, or to knock over trees and pillars to create pathways. This attribute allows you to destroy the Shadow Priest statues.

CHARACTER HEALTH

Each character has a Health Meter that governs their ability to sustain damage. This meter can be refilled in two ways: through Kombat and Pick-Ups.

Note: In 2-Player mode both characters share one Health Meter.

Healing in Kombat

When you defeat an enemy, you'll gain back some of your lost health.

Healing Through Pick-Ups

Through adventuring the player may discover Pick-Up items that instantly restore a set amount of health. These items can be dropped from enemies or can be found in breakable objects.

Save System

Saving the game can be accomplished by visiting designated Save Points or areas. The Save Points are displayed like glowing statues and are scattered throughout the game.



Using a Save Point

Upon entering a Save Point and activating the save device to trigger a save, the player will be given the option to **Save** or **Overwrite** a previous file. Press the **R2** button to save at the statue.

Save Game Data

Saving the game at a designated Save Point stores information regarding the location, character's name and the percentage of progress and time.

KOMBAT WEAPONS

FINDING AND USING WEAPONS

Acquiring a weapon comes about in several ways. Weapons may be a part of a level, such as in the Armory, or may be scattered on the ground in a battlefield.

When a weapon is found, get close then press the **R2** button to pick it up. This weapon can now be used until its maximum endurance has been exceeded, at which point it breaks. Weak, wooden weapons may break after only a few hits. Press the **R2** button at any time to throw the weapon (some weapons will perform an Impale when thrown). Getting knocked down by an attack will also cause the weapon to be dropped.

WEAPON USES

Kombat Usage

Weapons in kombat take on the properties of their parent button. For instance, all weapons when used with the **△** button will cause a launch or pop-up attack while a **□** button attack will be a low damage, quick hitting move. Pressing the **R2** button will throw or drop the held weapon. In general, weapons add either Increased Damage or Increased Range, sometimes both. In some special cases, weapons can grant additional attributes to the wielder.

Impales

The Impale is a powerful attack that contains a Damage Over Time component. You can choose to impale an enemy with a weapon. At that point, your opponent will continue to bleed until the weapon's endurance is drained or an opponent dies.

Impales refresh the Kombo Meter at each tick of damage. This makes a well thought out Impale attack a great tool in the hunt for larger kombos. Impales are performed in kombat by pressing the **R2** button while a weapon is held. This will throw the weapon in the direction the player is facing (or at the Locked On target if one is selected). A successful contact executes an Impale.

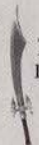
Non-Kombat Usage

Weapons can also be used as puzzle progressing items or as scenario items. For instance, you may need to find a large hammer to bash down a door that is impassable, or you may need to use a sword or axe to slice through spider webs or ropes.

KOMBAT WEAPONS/FATALITIES

Weapon Classes

Weapons are broken up into different classes, with each class sharing the same animation set. Here are the classes:

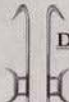


Two Handed Blades

Includes any two handed weapon like Axes.

1 Handed Blades

Includes 1 handed weapons such as Swords, 1 handed axes and daggers.



Dual-Weapons

Includes any multi-handed weapons, such as Dual Short Swords, Escrima Sticks and Dual Daggers.

Projectile Weapons

This class includes skulls, heads and rocks.

FATALITIES

Fatality Controls

The Fatality inputs utilize the directional buttons and a single button press (this button is determined by the Level of fatality that is being input: Fatality = button, Multality = button and Brutality = button).

Fatality Mode

Pressing the button initiates the Fatality Attack. This attack can be done anytime there is at least one Level of Fatality Meter stored (see **Single Player HUD**, pg. 11). If this attack hits an enemy, all the action on the screen will freeze. The main character will prepare to perform the fatality, and a hidden input timer begins to tick down once the input prompts appear on the screen.

Fatalities and the Kombo System

The Fatality System is heavily intertwined with the Kombo System, playing off of each other to form the basis of this Mortal Kombat staple. Each hit in a kombo is modified through different factors, and the totals are added to a Fatality Meter. Any attacks that are connected but are not within a kombo add no Fatality Meter. Each type of attack (Quick, Launch, Power, Grapple or Special) is worth a particular amount of Fatality Meter if performed within a kombo.

EXPERIENCE SYSTEM

The Experience System is designed to award you with new abilities, stat increases.

Gaining Experience Points

Defeating enemies is the primary means of acquiring Experience Points. Each enemy class in the game has a certain number of base points associated with it. Weaker grunt type enemies have the fewest and boss encounters reward the most. Modifiers can further increase these amounts.

Kombo Modifiers

During a Kombo (see **Kombo System**, pg. 16) any enemies that are killed add a bonus to the experience points. The total number of enemies killed at the end of the kombo is multiplied by the total experience normally gained and this new amount is then applied to the players Experience Point total.

Note: Every 10 kombo hits and enemy kills will add to a multiplier that multiplies your experience points.

Fatality Modifiers

Killing an enemy with a Fatality raises the amount of Experience Points gained.

Using Experience Points

Experience Points are used to upgrade the Basic Kombat, Special Attacks and Misc. Abilities. Each has a number of upgrades possible, with each successive attack or ability becoming more and more powerful.

Upgrading Kombat

Upgrading Kombat lets you unlock more and better Sequence Kombos or additional attacks. For example, you can start with a Sequence Kombo by pressing , , . After leveling up in this manner, it unlocks an additional button attack at the end that sets the enemy on fire.

Upgrading Special Attacks

Upgrading special attacks works exactly the same as upgrading Basic Kombat abilities.

Pick-Up System

The Pick-Up system allows you to gain gameplay progressing abilities or abilities that influence gameplay directly.

Pick-Up Item Acquisition

Pick-Up abilities are acquired by picking up items that bestow their abilities upon the character or by accomplishing a gameplay lock, such as defeating a boss character.

PICK-UP SYSTEM/ABILITIES

Below is a listing of Pick-Up items and abilities that the player can gain.

Non-Kombat Abilities

Some "platforming" abilities are gained after defeating a boss.

Special Attacks

When you begin playing, you'll have only three Special Attacks. Acquiring the rest is accomplished by upgrading the Special Attack.

Fatality Inputs

Fatality Inputs are uncovered through many means, and the Pick-Up system being only one of them.

Collection System

Similar to the Pick-Up System, the Collection System allows you access to upgrades that will modify your character throughout the course of the game or unlock hidden features. Rewards are not required at any time to progress the game, they are simply an additional level of goals and rewards for you to experience.

Commodities – Collection and Usage

There are chances to acquire items that are used as a gauge to unlock special features such as additional costumes, hidden characters, etc. These objects can be found by uncovering secrets, they can be gained from completing scenarios, or can simply be found in areas off the beaten path. Here are a some of the coins you'll find within the game:



Gold Dragon Koin (flames)

Gives Platform Ability (Long Jump & Wall Run).



Boss Koin

Contains a Platform Ability.



Yellow, Green & Blue Koins

Yellow (Experience), Blue (Special Energy) & Green (Health).



Gold Koin

It opens Concept Art. It can be obtained by shooting a special projectile attack.



Special Koin (Red)

Gives Fatality.

VERSUS RECORDS

Player 1

W / L

Player 2

W / L

_____	/	_____	/
_____	/	_____	/
_____	/	_____	/
_____	/	_____	/
_____	/	_____	/
_____	/	_____	/
_____	/	_____	/
_____	/	_____	/
_____	/	_____	/
_____	/	_____	/
_____	/	_____	/
_____	/	_____	/

KREDITS

Midway Games, Inc.

Executive Producer & Creative Director
Ed Boon

Art Directors
Steve Beran & Tony Goskie

Producer
Shaun Himmerick

Midway - San Diego

Technical Director
Gabriel Valencia

Associate Producer
Hans Lo

Assistant Producer
Jaime Bencia

Mortal Kombat Team - Los Angeles

Producer
Barclay Smith

Lead Designers
Adam Puhl & John Edwards

Two-Player Designer
Luke Whiteside

Level Designers
Bill McDonald, Paul Edwards, Michael Bilodeau & Michael Portillo

Camera Designer
Hollie Blackman

Secrets & Menu Designer
Earl Berkeley

Additional Enemy/Character Design
Jason Cole

Additional Effects Design
Omar Kendall

Lead Programmer
David Gautrey

Graphics System Programmer
Peter Jefferies & Paul Stapley

Game Programmers
Ben Kutcher, Romalis Taylor & David Gautrey

Two-Player Programmer
John Lawrie

Systems Programmers
Ed Ma, Yanbing Chen, Krassimir Simeonov & Jim Leiterman

Additional Programming
James Guintu, Alexandra Doudian, Eitan Levy & Peter Jefferies

Lead Character Artist
Mark Lappin

Character Artist
Jeff Wand

Lead Background Artist
Damon Dubois

KREDITS

Background Artist
Joel Payne & Richie Romero

Background Concepts
Wendy Davis

Front End Artwork
Jeff Godfrey, Davin Cheng & Takashi Matsubara

Lead Animator
Bruno Velazquez

Animators
Kyung Hee Kelly Shon & Seung Young Lee

A/V Implementation
Todd Piperi

Production Support
Edwin DeNicholas

System Administrator
Tom McGuire

Testers
Gregory Smith & Ed Hendricks

Office Manager
Kristin Burbidge

Technical Director
David Ollman

Art Director
Paul Interrante

Production Director
James Maxwell

Director of Operations
Teresa Chang

Studio Head
Christine Hsu

Mortal Kombat Team - Chicago

Motion Capture and Animations
Carlos Pesina, Tony Zelliro, Rick Chase & John Vogel

Audio Lead
Dan Forden

Music, Effects and Speech
Chase Ashbaker, Rich Carlé, Brian Chard & Vince Pontarelli

Additional Audio
CGMUSIC

Music Composition on Opening Cinematic
Soundelux Design Music Group

Additional Technical Support
Jon Greenberg & Alan Villani

Renders
Pav Kovacic

Additional Art Support
Mike Taran, Joe Flores, Herman Sanchez & Jennifer Hedrick

KREDITS

Cinematics Manager
Jon McClenahan

Cinematic Director
Matty Stoltz

Cinematics Graphics and Animation

Roger Berrones, Paul Chamnankit, Rick Chase, Won Jun Cho, Sam Crider, Chuck Ernst, Jim Gentle, Chuck Ghislandi, Aaron Hall, Jin Jang, Angie Lai, Tony Lewellen, Greg Mitchell, Rick O'Meara, Ty Primosch, Vince Proce, Matt Taylor, Tony Zeffiro

Story by
James Krueger

Story Support
John Vogel, Jon Greenberg & Alexander Barrentine

Additional Production Support
John Podlasek, Paulo Garcia, Brian Lebaron, Mark Smith & Warren Wilkes

Localization Support
Samuel Peterson, Ivan Glaze & Mattion Clermont

Voice Talent

English - Adam Hernandez, Ben Sarason, Beth McLewski, Brian Chard, Bryan Bode, Carlos Pesina, Chase Ashbaker, Dan Bakkedahl, Dan Förden, Darrel Christian, David Allen, Ed Boon, Robert Keating, Herman Sanchez, Jarod Prano, Jin Kim, Joe Yau, Johanna Anonuevo, Lita Lopez, Matt Chapman, Max Crawford, Rich Carle, Richard O'Meara, Rigo Cortez, Rom Barkhodja, Ryan Rosenberg, Shadow, Shaun Himmerick, Steve Ritchie & Vince Pontarelli

Spanish - Barona Eugenio, Serrano Salvador, Samillán Ana, Teixeira Jorge, Suárez Enrique, Tena Pedro, Sáinz Marta, Hernández Fernando, Rubio Tomás, Bascones Rais & Gamir Javier

French - Anne Rochant, Antoine Tomé, Christophe Lemoine, Gérard Dessalles, Marc Alfos, Martial Leminox, Patrice Mellenc, Patrick Borg, Pierre Tessier, Serge Thiriet, Susan Sindberg, Sylvain Lemarie, Thierry Kazazian & Tony Joudrier

Italian - Alberto Olivero Pomerò, Andrea De Nisco, Antonio Paiola, Barbara Federico, Gtro Imparato, Claudio Ridolfo, Gianni Gaude, Luigi Rosa, Marco Balzarotti, Marco Paganì, Massimo Di Benedetto, Renata Bertolas, Riccardo Rovatti & Roger Mantovani Spataro

German - Achim Barmstein, Christian Jungwirth, Christian Wewerka, Frank Ciazynski, Hans Peter Gastiger, Joachim Puetz, Kurt Spielmann, Nick Benjamin, Renate Wicke, Renier Baaken, Rolf Idler, Steffen Börmel, Stephane Bittoun & Sylvia Heid

Motion Capture Talent
Carlos Pesina, John Vogel, Paul Interrante, Bruno Velazquez, Shaun Himmerick, Jim Gentle, Pek Pongpaet, Kevin Myers & Jenna Mitchell DeLuca

Production Development Director - Art
Martin Murphy

Quality Assurance - San Diego

Director of QA
Paul Sterngold

QA Manager
Malcolm Scott

QA Supervisor
Adam Jones

Lead Product Analyst
Ronald Salleza & Eric Chow

Technical Standards Analysts
Josh Palmer, Ray Mitchell, Colin Payette, Jason Jorgensen & Iina Yamaguchi

Product Analysts
Rogelio Aguilar, Peter Briones, Ben Kwok, Sateem Crawford, Mike Iguico, Adrian Nutter, Jeff Heidenreich, Rebecca Dowd, Vinnie Cancino III, Daiwet McClendon, Guy Chapman, Mike Calmenson, Jeff Creed, Madeleine Shopoff & Joel Hallmark

KREDITS

Quality Assurance - Chicago

Chicago QA Supervisor
Jacob Beucler

Lead Product Analyst
Warren Wilkes

Product Analysts
Adam Coriglione, Andy Hernandez, Chris McFadden, Dave Bulvan, Greg Ranz, John Cruz, Ki Wolf-Smith, Reggie Banks, Richard Vrtis, Rob Lathan & Tim Waller

Print Design & Production
Midway Creative Services, San Diego, CA

Midway Management
David Zucker, Matt Booty & Mark Beaumont

Chicago Studio Head
Scott Bayless

Marketing and Media Relations
Steve Allison, Mona Hamilton, Reilly Brennan, Tim DaRosa, Tom McClure & Randy Severin

Midway Legal
Debbie Fulton, Michael Burke, Cory Halpern, Robert Gustafson & Christine Rios

Creative Media
Rigo Cortes, Chris Skrundz, BethAnn Smukowski, Jamie Vogel, Christa Woss, Michael Crawford, Jack O'Neal & Larry Wotman

The International Coordination
Mike Eglington, Matt Hubbard, Phil Robinson, Joanna Hammond, Yoni Arias & Chris Giggins

Additional Thanks
Michael Gottlieb, Steve Crane, Sal Divita, Debbie Austin, Elvis, the MK Super Players Adam Hernandez and Eddie Ferrier, Fuzzy Gerdes, Mustapha, James Stiefelmaier, Richard Rouse, Neill Glancy, Randall Mage, Nina Lampinen & Everyone at Localsoft

We would also like to thank our friends and family who put up with the many late nights and weekends. Tell your friends.

WARRANTY

Midway Games Limited warrants to the original purchaser of this Midway Games Limited product that the medium on which the computer programme is recorded is free from defects in materials and workmanship for a period of ninety (90) days from the date of purchase. This Midway Games Limited software is sold "as is", without express or implied warranty of any kind, and Midway Games Limited is not liable for any losses or damage of any kind resulting from use of this programme. Midway Games Limited agrees for a period of ninety (90) days to either repair or replace, at its option, free of charge, any Midway Games Limited product, postage paid, with proof of purchase, at its Customer Service Centre. Replacement of this Game Pak (PAK), free of charge to the original purchaser is the full extent of our liability. Please mail to Midway Games Limited, 43 Worship Street, London EC2A 2DX Please allow 28 days from dispatch for return of your Game Pak.

This warranty is not applicable to normal wear and tear. This warranty shall not be applicable and shall be void if the defect in the Midway Games Limited product has arisen through abuse, unreasonable use, mistreatment or neglect.

THIS WARRANTY IS IN LIEU OF ALL OTHER WARRANTIES AND NO OTHER REPRESENTATIONS OR CLAIMS OF ANY NATURE SHALL BE BINDING OR OBLIGATE MIDWAY GAMES LIMITED. ANY IMPLIED WARRANTIES OF APPLICABILITY TO THIS SOFTWARE PRODUCT, INCLUDING WARRANTIES OF MERCHANTABILITY AND FITNESS FOR A PARTICULAR PURPOSE, ARE LIMITED TO THE NINETY (90) DAY PERIOD DESCRIBED ABOVE. IN NO EVENT WILL MIDWAY GAMES LIMITED BE LIABLE FOR ANY SPECIAL, INCIDENTAL, OR CONSEQUENTIAL DAMAGES RESULTING FROM POSSESSION, USE OR MALFUNCTION OF THIS MIDWAY GAMES LIMITED PRODUCT. THIS IN NO WAY AFFECTS YOUR STATUTORY RIGHTS.

This computer programme and its associated documentation and materials are protected by both National and International copyright law. Storage in a retrieval system, reproduction, translation, hiring, lending, broadcasting and public performances are prohibited without express written permission of Midway Games Limited.

Midway Games Limited
43 Worship Street
London
EC2A 2DX
www.midway.com

Midway Games Technical
Support
+44(0) 207 382 7739
Monday-Friday 10:00-17:00
support@midwaygames.co.uk

CUSTOMER SERVICE

Customer Services Numbers

• Australia	1300 365 911
<small>Calls charged at local rate. Please call these Customer Service Numbers only for hardware support of PlayStation products.</small>	
• Österreich	0820 44 45 40
<small>0.116 Euro/Minute. Rufen Sie diese Kunden Servicenummer bitte nur an, wenn Sie Hardware-Support für PlayStation-Produkte benötigen.</small>	
• Belgique/België/Belgien	011 516 406
<small>Prix d'un appel local. Veuillez composer les numéros du service après-vente pour recevoir une assistance technique destinée uniquement aux produits PlayStation.</small>	
• Danmark	70 12 70 13
<small>Mån-Fredag 15-21; Lør-Søndag 12-15. Ring venligst kun til disse kundenservicecentre vedrørende hardware-support til PlayStation-produkter.</small>	
• Suomi	0600-411911
<small>17.00-21.00 ma-to, 0.79 luon/min. Tästä asiakaspalvelunumerosta voi käyttää vain PlayStation-luottokortin liittämistokkeen liittyvissä kysymyksissä.</small>	
• France	0820 31 32 33
<small>Prix d'un appel local - ouvert du lundi au samedi. Veuillez composer les numéros du service après-vente pour recevoir une assistance technique destinée uniquement aux produits PlayStation.</small>	
• Deutschland	01805 766 977
<small>0.12 Euro/Minute. Rufen Sie diese Kunden Servicenummer bitte nur an, wenn Sie Hardware-Support für PlayStation-Produkte benötigen.</small>	
• Ελλάδα	00 32 106 782 000
<small>Εθνική Κλήση. Παρακαλείσθε να τηλεφωνείτε σε αυτούς τους αριθμούς του Ταχυτού Επικοινωνίας Πελάτη μόνο για θέματα υποστήριξης υλικού των προϊόντων PlayStation.</small>	
• Ireland	0818 365065
<small>All calls charged at National Rate. Please call these Customer Service Numbers only for hardware support of PlayStation products.</small>	
• Israel	09 971170
<small>Please call these Customer Service Numbers only for hardware support of PlayStation products.</small>	
• Italia	199 116 266
<small>Tariffa Nazionale. Chiamare questi numeri del Servizio Clienti solamente se si necessita di assistenza relativa al hardware dei prodotti PlayStation.</small>	
• Malta	23 436300
<small>National Rate. Please call these Customer Service Numbers only for hardware support of PlayStation products.</small>	
• Nederland	0495 574 817
<small>Interlokale kosten. Bel deze klantenservicenummers alleen bij hardwareproblemen met PlayStation-producten.</small>	
• New Zealand	09 415 2447
<small>National Rate. Please call these Customer Service Numbers only for hardware support of PlayStation products.</small>	
• Norge	81 55 09 70
<small>Mån-Fre 15-21; Lør-Søndag 12-15. Venligst ring disse kundenservicecentre bare for maskinvare støtte i forbindelse med PlayStation-produkter.</small>	
• Portugal	707 23 23 10
<small>Contacte nos através destes números de Assistência ao Cliente para obter assistência técnica (hardware) apenas para produtos da PlayStation.</small>	
• España	902 102 102
<small>Tariffa Nacional. Al llamar a estos números del Servicio de atención al cliente sólo obtendrá asistencia para los productos PlayStation.</small>	
• Sverige	08 587 822 25
<small>Mån-Fre 15-21; Lør-Søndag 12-15. Ring endast dessa kundenservicecenter för maskinvarusupport av PlayStation-produkter.</small>	
• Suisse/Schweiz/Svizzera	0848 84 00 85
<small>Tarif appel national / Nationaler Tarif / Tariffa Nazionale: Veuillez composer les numéros du service après-vente pour recevoir une assistance technique destinée uniquement aux produits PlayStation.</small>	
• UK (network Gaming Only)	08702 42 22 99
• UK (all other enquiries)	08705 99 88 77
<small>National rate. Calls may be recorded for training purposes. Please call these Customer Service Numbers only for hardware support of PlayStation products.</small>	