

<http://www.replacementdocs.com>



**SQUARESOFT®**

\*NOT FOR RESALE

**WARNING: READ BEFORE USING YOUR PLAYSTATION®2 COMPUTER ENTERTAINMENT SYSTEM.**

A very small percentage of individuals may experience epileptic seizures when exposed to certain light patterns or flashing lights. Exposure to certain patterns or backgrounds on a television screen or while playing video games, including games played on the PlayStation 2 console, may induce an epileptic seizure in these individuals. Certain conditions may induce previously undetected epileptic symptoms even in persons who have no history of prior seizures or epilepsy. If you, or anyone in your family, has an epileptic condition, consult your physician prior to playing. If you experience any of the following symptoms while playing a video game – dizziness, altered vision, eye or muscle twitches, loss of awareness, disorientation, any involuntary movement, or convulsions – **IMMEDIATELY** discontinue use and consult your physician before resuming play.

**WARNING TO OWNERS OF PROJECTION TELEVISIONS:**

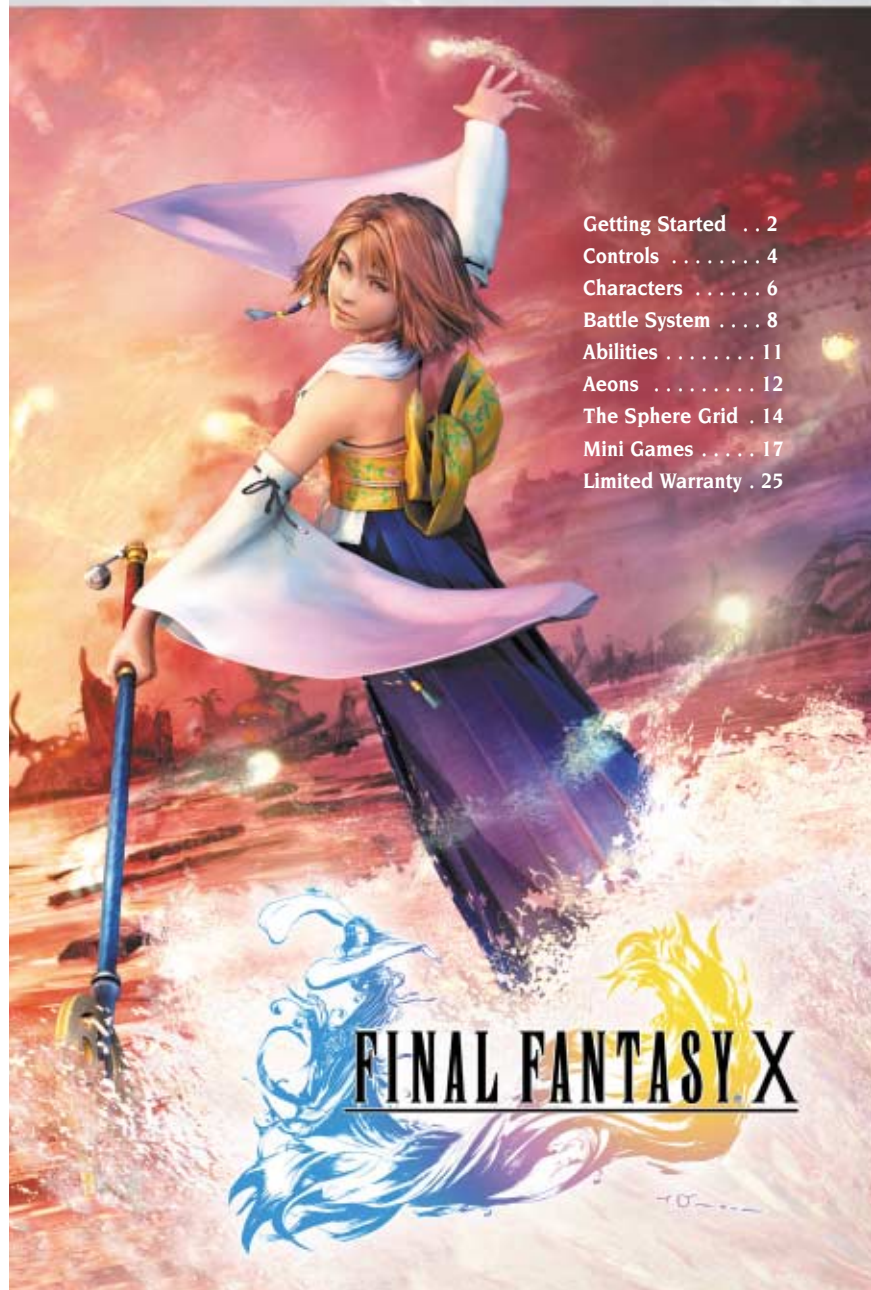
Do not connect your PlayStation 2 console to a projection TV without first consulting the user manual for your projection TV, unless it is of the LCD type. Otherwise, it may permanently damage your TV screen.

**USE OF UNAUTHORIZED PRODUCT:**

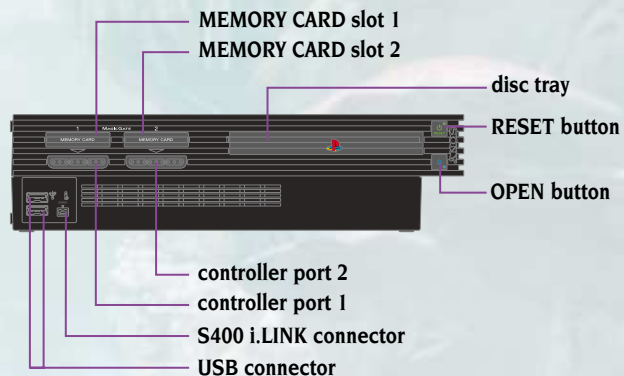
The use of software or peripherals not authorized by Sony Computer Entertainment America may damage your console and/or invalidate your warranty. Only official or licensed peripherals should be used in the controller ports or memory card slots.

**HANDLING YOUR PLAYSTATION 2 FORMAT DISC:**

- This disc is intended for use only with PlayStation 2 consoles with the NTSC U/C designation.
- Do not bend it, crush it or submerge it in liquids.
- Do not leave it in direct sunlight or near a radiator or other source of heat.
- Be sure to take an occasional rest break during extended play.
- Keep this disc clean. Always hold the disc by the edges and keep it in its protective case when not in use. Clean the disc with a lint-free, soft, dry cloth, wiping in straight lines from center to outer edge. Never use solvents or abrasive cleaners.



Getting Started . . .	2
Controls . . . . .	4
Characters . . . . .	6
Battle System . . . .	8
Abilities . . . . .	11
Aeons . . . . .	12
The Sphere Grid . . .	14
Mini Games . . . . .	17
Limited Warranty . .	25



Set up your PlayStation®2 computer entertainment system according to the instructions in its Instruction Manual. Make sure the MAIN POWER switch (located on the back of the console) is turned ON. Press the RESET button. When the power indicator lights up, press the open button and the disc tray will open. Place the **FINAL FANTASY® X** (hereafter “FFX”) disc on the disc tray with the label side facing up. Press the open button again and the disc tray will close. Attach game controllers and other peripherals, as appropriate. Follow on-screen instructions and refer to this manual for information on using the software.

## START MENU

The Start Menu shown on the right will appear after the opening demo or when the START button is pressed. To play the game from the beginning, select “New Game.” To continue a saved game, select “Load.”



## Save Data

Each save file for FFX uses at least 64KB of space on a Memory Card (8MB) (for PlayStation®2). One memory card can hold up to 99 save files from FFX.

## FIELD SCREEN

### Map

The map gives a bird's-eye view of your character's current location, indicated by a yellow arrow. Your destination is generally marked by a red arrow. The map can be turned on and off in the Config section of the Main Menu.

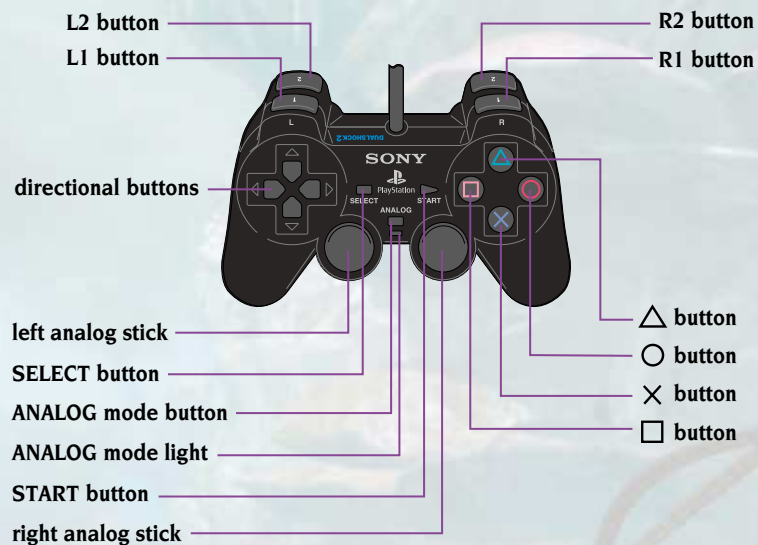


### Player's character

### Save Sphere

Use spheres like this one to save your game. They are only found in certain locations, so be sure to save whenever you get the chance.

## DUALSHOCK®2 ANALOG CONTROLLER CONFIGURATION



There are three control modes in **FINAL FANTASY X**, each of which is listed in the chart on the next page.

The controller in FFX will always be in analog mode, enabling use of the left analog stick. The analog mode button and red LED light are always set to ON. The vibration mode can be turned on and off in the Config section of the Main Menu.

**NOTE:** This game may be incompatible with controllers other than the DUALSHOCK®2 analog controller.

## BASIC OPERATION

	Field Screen	Menu Screens	Battle Screen
<b>Directional buttons</b>	Move character	Move cursor	Move cursor / Change pages with left and right buttons
<b>Left analog stick</b>	Move character	Move cursor	Move cursor / Change pages with left and right movement
<b>○ button</b>	Cancel / Hold down to walk	Cancel	Cancel
<b>× button</b>	Talk / Examine / Confirm	Confirm	Confirm
<b>△ button</b>	Display Menu		Defend (skips turn)
<b>L1 button</b>		Change characters	Display Switch window / Select character
<b>L2 button</b>		Scroll menus back	Scroll Switch window
<b>R1 button</b>		Change characters	Scroll CTB window up
<b>R2 button</b>		Scroll menus forward	Scroll CTB window down
<b>START button</b>	Pause *		
<b>SELECT button</b>			

Press the L1, L2, R1, R2, START, and SELECT buttons together to perform a Soft Reset, returning the game to the Start Menu.\*

\* Pause and Soft Reset are disabled during certain scenes.

**FINAL FANTASY X** is about a summoner named Yuna and her quest to destroy a mysterious force known as "Sin." You must guide the main character, Tidus, through the many events of the game. Here we introduce the characters that accompany Yuna along her journey. Note that each character has a unique area of expertise, and can equip different weapons and armor. Review their strengths so you can use them to your advantage on the battlefield.



## TIDUS

Tidus is a cheerful, rising blitzball star playing for the Zanarkand Abes. He has long hated his father, who was a renowned player himself before his untimely death. Tidus's quick moves allow him to attack even the swiftest foes with ease.



## YUNA

Daughter of High Summoner Braska. Honest and determined, Yuna embarks on a pilgrimage to obtain the Final Aeon and defeat Sin. Yuna is learning the mystical art of summoning aeons—powerful spirits of yore.



## WAKKA

Coach and captain of the local blitzball team, the Besaid Aurochs. Wakka plans to retire from the sport after this year's tournament, so that he can devote himself fully to serving as Yuna's guardian. His deadly blitzball is especially useful for knocking down aerial enemies.



## LULU

One of Yuna's guardians. She and Wakka think of Yuna as a younger sister. Lulu's stoic and self-possessed nature makes her seem insensitive at times. She specializes in the art of black magic, using various dolls to help cast powerful spells.



## KIMAHRI RONSO

A powerful warrior of the Ronso tribe. Kimahri has watched over Yuna from her youngest days. He speaks little, but is deeply devoted to Yuna and serves her loyally as a guardian. Kimahri can learn enemy skills with his Lancet ability.



## AURON

The legendary guardian who, together with High Summoner Braska, defeated Sin ten years ago. A man of few words, he guides Yuna and Tidus on their mission to vanquish Sin once more. He swings his gigantic sword with such power that even the toughest fiends are cut asunder.



## RIKKU

A young Al Bhed girl. Her personality is upbeat and positive, and she is not afraid to speak her mind. She works hard to restore her outcast people to their former glory. Rikku handles mechanical enemies with ease, and can steal items from enemies, too.

## BATTLE SCREEN

1. Command window.
2. CTB window.
3. Characters' HP and MP.
4. Overdrive gauge.
5. Help text window.



## BATTLE ORDER

This installment of FINAL FANTASY features the Conditional Turn-based Battle (hereafter "CTB") system, where time passes only when commands are executed in battle. The turn order of both allies and enemies is displayed in the upper right-hand side of the screen.



The turn order may change depending on what each character and each enemy does. For example, after performing a powerful special technique, a character may require extra recovery time before he's ready to execute his next action. However, you can counterbalance this by casting a speed-enhancing spell such as Haste on that character, thereby increasing the total number of turns he may take. There are many other factors that affect the order of battle, so experiment with different actions and learn how to use this new system to its fullest.

## Switching Characters

During any of your characters' turns, press the L1 button to bring up the Switch window. Here you can switch party members in and out of battle at will. When a character is switched in, he or she can act immediately.



## Trigger Commands

At certain points in the game, special commands called Trigger Commands become available. To use them, press the left directional button to access the Trigger Commands window, then select the desired command.



## Overdrive

Each character's Overdrive gauge charges up whenever the proper conditions are met. Overdrive modes (see below) determine what these conditions are. Once a character's gauge is full, the word "Overdrive" pops up as shown here, and he or she can unleash a special attack. Press the left directional button to access the Overdrive window, then select the Overdrive you wish to execute.



## Overdrive Modes

Overdrive modes determine the conditions that must be met in order to charge up the Overdrive gauge. Select an Overdrive mode for each character in the Overdrive section of the Main Menu. At the beginning of the game, only a single Overdrive mode may be available. All characters can learn new Overdrive modes by fulfilling the required conditions for those modes a certain number of times.



## Mode Name Conditions

- Stoic** Gauge charges when character takes damage.
- Warrior** Gauge charges when character damages an enemy.
- Healer** Gauge charges when character restores allies' HP.
- Dancer** Gauge charges when character evades an attack.

Many other Overdrive modes exist, so experiment with different courses of action in battle to learn them.

## STATUS AILMENTS AND HOW TO RECOVER

During battle, characters are sometimes inflicted with nasty status ailments. Refer to the chart below to find effective ways to recover from them.

### STATUS EFFECTS

Ailment	Symptoms	Recommended Treatment
<b>Berserk</b>	Increased Strength, but attacks enemies impulsively and uncontrollably	Esuna, Remedy
<b>Confusion</b>	Attacks allies indiscriminately	Esuna, Remedy, being physically struck
<b>Curse</b>	Cannot use Overdrives, gauge freezes	Dispel, Holy Water
<b>Darkness</b>	Lowered accuracy for physical attacks	Esuna, Eye Drops, Remedy
<b>Doom</b>	Falls unconscious when countdown reaches zero	None
<b>KO</b>	Cannot participate in battle	Life, Full-Life, Phoenix Down
<b>Petrification</b>	Cannot participate in battle	Esuna, Soft, Remedy
<b>Poison</b>	Suffers damage after taking turn	Esuna, Antidote, Remedy
<b>Silence</b>	Cannot cast spells	Esuna, Echo Screen, Remedy
<b>Sleep</b>	Cannot participate in battle	Esuna, Remedy, being physically struck
<b>Slow</b>	Lowered Agility, turns come slowly	Esuna, Remedy
<b>Zombie</b>	Takes damage from restorative magic	Holy Water, Remedy



## GAME OVER

The game will end if all active party members are KO'd (HP is reduced to 0) or petrified—even if inactive members are still able to fight. The game will continue, however, as long as at least one party member manages to flee from battle using the Escape command.

There are two types of abilities: Command Abilities and Auto-Abilities. Command Abilities are actions that must be selected in battle, while Auto-Abilities are automatically enabled through your characters' current weapons and armor. Characters acquire new Command Abilities by activating ability nodes on the Sphere Grid (see page 14).

### Default Command Abilities

<b>Attack</b>	Strike an enemy.
<b>Item</b>	Use an item.
<b>Escape</b>	Run away from battle.
<b>Weapon</b>	Change equipped weapon.
<b>Armor</b>	Change equipped armor.



Auto-Abilities are present in certain weapons and armor, and are always active during battle as long as that item is equipped. See the next section for details.

## CUSTOMIZING WEAPONS AND ARMOR

At a certain point in the game, the Customize section will appear in the Main Menu. Here, you can upgrade your weapons and armor to your liking. Effects you add here become Auto-Abilities, and they remain active as long as that weapon or armor is equipped. More Auto-Abilities become available as you acquire new kinds of items.

1. Weapon/armor to be customized.
2. Name of required item.
3. Number of that item currently in possession.
4. Quantity remaining after customization.
5. Help window: Description of selected ability.



Aeons are divine creatures that only answer the call of a true summoner. Each aeon protects its master with unique powers and characteristics. Aeons grow stronger as their summoners do.

When Yuna summons an aeon, the other party members must withdraw to a safe distance. Only then can Yuna direct the aeon's actions. Like your regular party members, aeons have an Overdrive gauge, and when it charges up they can unleash an awe-inspiring Overdrive technique. If an aeon's HP reaches zero, it will vanish and the other characters will return to continue the fight.



## AEONS

**Valefor** A swift, flying aeon.

**Ifrit** An aeon engulfed in eternal flame.

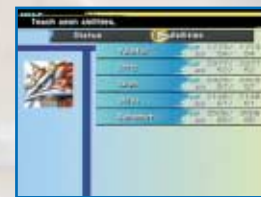
**Shiva** An icy aeon in the form of a beautiful woman.

**Ixion** A unicorn comprised of pure lightning.

You will undoubtedly come across other aeons as you progress through the story of FFX. Some say that secret aeons may reveal themselves to those who complete extraordinary tasks.

## DEVELOPMENT OF AEONS

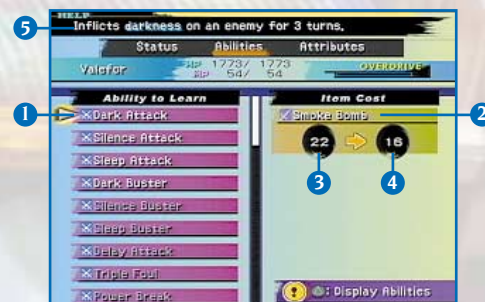
Under the Aeons section of the Main Menu, you can view various statistics of your aeons. Each aeon's growth is metaphysically bound to Yuna's, but if you prevail against certain opponents, Abilities and Attributes sections will become available. These will let you teach aeons new abilities and raise their attributes.



### Abilities

Select Abilities to teach the aeons various Command Abilities. When you select an aeon, the image shown on the right will appear on the screen. Spend items to teach aeons new Command Abilities.

1. Ability the aeon is to learn.
2. Name of required item.
3. Number of that item currently in possession.
4. Quantity remaining after use.
5. Help window: Information about the selected ability.



### Attributes

Select the Attributes section to increase your aeons' powers. The menu shown on the right will appear once you select the aeon whose attributes you wish to increase. Use spheres to raise your aeons' attributes.

1. Attribute to be developed.
2. Sphere required for development.
3. Number of that sphere currently in possession.
4. Quantity remaining after use.
5. Help window: Displays information regarding development.





## UNDERSTANDING THE SPHERE GRID

Character skill and attribute development in FFX is conducted exclusively on the Sphere Grid. Characters will not grow in power simply by defeating enemies as in previous FINAL FANTASY installments, so you must grasp the basics of the Sphere Grid in order to strengthen your characters.

## CHARACTER DEVELOPMENT FLOWCHART

Characters earn Ability Points (AP) after defeating an enemy in battle. Certain enemies also surrender spheres, which are used to strengthen your characters.

When a character's AP reaches a certain limit, his or her sphere level (S. Lvl) will increase.

The character can then move a certain number of spaces on the Sphere Grid equal to his or her current sphere level.

Activate nodes on the Grid using their corresponding spheres in order to raise attributes and teach new abilities.

## THE SPHERE GRID

Selecting **Sphere Grid** from the Main Menu will bring up the screen shown on the right.

Selected character

Sphere Level (S. Lvl)

Cursor

Character's current position



Press the **X** button to display the command window.



Choose **Move** if you wish to move that character around the Grid. When you select Move, the illuminated circles indicate how far you can move based on your current sphere level. Choose **Use** if you wish to use a sphere to activate a node.



Selecting **Use** will open a window showing all the spheres currently in your possession. You can only use spheres that correspond to a nearby node, highlighted in white. Place a sphere into its corresponding node to learn the ability available there. In addition to the node at the character's current position, you can activate any adjacent nodes without moving to them.

## COLORS

Each character leaves a different color when he or she activates a node, as illustrated in the diagram on the right. Multiple characters can activate the same node, so use the color scheme to figure out which character has activated which node.



As an example, let's have Tidus learn **Flee**.



First, move to a node adjacent to Flee.



Select an Ability Sphere. The cursor will automatically move to Flee, located at the adjacent node.



Press the **Y** button to confirm your selection. Tidus has now learned Flee. Since Flee is a Command Ability, Tidus can perform it in any subsequent battles.

**Remember! Spheres can be obtained from treasure chests as well as from enemies defeated in battle. Any party member can use any sphere in your inventory. Some spheres alter the Grid's structure, while others allow movement across the entire Grid. You have complete control over your characters' development, so keep in mind that poor choices early on can hinder the party at later stages.**

## SPHERE GRID CONTROLS

**SELECT button** Zoom in and out.

**L2, R2 buttons** Tilt the Sphere Grid and return to normal viewing angle.

**△ button** View the selected character's status.



### BLITZBALL

Blitzball is an underwater sport popular among all peoples of Spira. Teams from every corner of Spira gather at the stadium in Luca for the annual blitzball tournament. The people of Spira love blitzball because it lets them forget about Sin, if only for a moment.



In FFX you can control a team in blitzball. The more matches you play, the more experience points you gain, which can be used to increase your players' abilities. Review the in-game blitzball tutorial for instructions and official game rules.



### CHOCOBOS

Many wild chocobos roam certain areas of Spira. Wild chocobos are very difficult to train. By guiding your chocobo through a series of training courses, you too can become an expert chocobo rider.



**SQUARE CO., LTD.**

Producer Yoshinori Kitase  
 Directors Motomu Toriyama (Event)  
 Takayoshi Nakazato (Map)  
 Toshiro Tsuchida (Battle)  
 Sound Producer & Music Nobuo Uematsu  
 Main Programmers Koji Sugimoto (Character)  
 Takashi Katano (Event)  
 Program Supervisor Ken Narita  
 Character Designer Tetsuya Nomura  
 Art Directors Yusuke Naora (World)  
 Shintaro Takai (Battle)  
 Scenario Kazushige Nojima  
 Image Illustrator Yoshitaka Amano  
 Field Programmers Yukio Ishii  
 Chikara Yanagimachi  
 Battle Programmer Masaki Kobayashi  
 Menu Programmer Tomonari Ohnishi  
 Chief VFX Programmer Yasunari Ohnishi  
 Real-Time Graphics Director Tomohiro Hasegawa  
 Monster Designer Tetsu Tsukamoto  
 Chief Subcharacter Designer Fumi Nakashima  
 Lead Real-Time Polygon Designers Takanari Tajima  
 Junichiro Hosokawa  
 Mamoru Tagata  
 Battle Motion Director Shintaro Tamai  
 Field Motion Director Go Kikuchi  
 Chief Character & Motion Coordinator Shinji Watanabe (D3D Co., LTD.)  
 Chief Art Designer Tetsuya<T2>Takahashi  
 3D Map Director Yohichi Kubo  
 Lead Field Designers Yoshinori Ogura  
 Takaharu Matsuo  
 Shinichiro Hamasaka  
 Masayo Asano  
 Lead Battlefield Designer Tsuyoshi Okahisa  
 CG Supervisor Satoshi Tsukamoto  
 Movie Director Hiroshi Kuwabara  
 Chief Storyboard Designer Akira Oguro  
 Movie Programmer Kengo Sasaoka  
 Music Junya Nakano  
 Masashi Hamauzu  
 Sound Programmer Minoru Akao  
 Supervising Dialogue Editor Teruaki Sugawara  
 Supervising Sound Editors Eiji Nakamura  
 Chiharu Minekawa  
 Quality Assurance  
 General Manager Akihito Shoji  
 QA Supervisors Tetsuya Hiraoka  
 Kenichi Miyake

**Localization**

Senior Vice President Koji Yamashita  
 General Manager Akira Kashiwagi  
 Localization Directors Ichiro Nonaka  
 Kazuyoshi Tashiro  
 Localization Specialists Alexander O. Smith  
 Aziz Hinoshita  
 Localization Engineer Richard Honeywood  
 Localization Assistants Seikou Hokama  
 Aiko Ito  
 General Producer Tomoyuki Takechi  
 Production Executive Hisashi Suzuki  
 Executive Producer Hironobu Sakaguchi

**Cast – Voice Actors**

Tidus James Arnold Taylor  
 Yuna Hedy Burress  
 Wakka John DiMaggio  
 Lulu Paula Tiso  
 Kimahri John DiMaggio  
 Auron Matt McKenzie  
 Rikku Tara Strong  
 Seymour Alex Fernandez  
 Jecht Gregg Berger  
 Subcharacters David Arnett  
 Corey Burton  
 Catherine Cavadini  
 Vicki Davis  
 John DeMita  
 Debbie Derryberry  
 Judy Durand  
 Greg Finley  
 Julia Fletcher  
 Quinton Flynn  
 Roger Jackson  
 Tom Kenny  
 Sherry Lynn  
 Michael McShane  
 Matt Miller  
 Candi Milo  
 Adam Paul  
 Richard Penn  
 Andy Philpot  
 Paige Pollack  
 David Randolph  
 David Rasner  
 Noreen Reardon  
 Robbie Ryst  
 Dwight Schultz  
 Vernon Scott  
 Andre Sojliuzzo  
 Cree Summer  
 Andreana Weiner  
 Ruth Zalduondo

**Screenmusic Studios AKA SMS**

U.S. Recording Ernie Sheesley  
 Recording Engineer Rhodri Davies  
 P.A. Eric Lewis  
 Technical Supervisor Paul Andris  
 Dialogue Editors Elliot Anders  
 Rhodri Davies  
 Jeremy Pitts  
 Michelle Rochester  
 Gene Semel  
 John Bregman  
 Chris Eaton  
 ADR Editors Ernie Sheesley  
 Rhodri Davies  
 Transfer Carl Bantleon  
 Recording Studio Screenmusic Studios AKA SMS  
 Dialogue Editorial Screenmusic Studios AKA SMS  
 Line Producer Michael Hack  
 Voice Director/Casting Director Jack Fletcher

**SQUARE SOFT, INC.**

Localization Brody Phillips  
 Jennifer L. Mukai  
 Shigeto Sammy Matsushima  
 Rika Maruya  
 Ryo Taketomi  
 Yutaka Sano  
 Quality Assurance Jonathan Williams  
 David "Ribbs" Carrillo  
 Jaime J. Bencia  
 Mohammed A.C. Wright  
 Chris Manprin  
 Jesse Cheek  
 Jared Elliott  
 Dana J. Kwon  
 Kenji Nakamura  
 Bryan D. Chen  
 Michael D. Christoffers  
 Michael A. Erickson  
 Ryan J. Gibson  
 Jeff J. Love  
 Nicholas M. Pisani  
 Aaron J. Adams  
 Daniel Bustamante  
 Mathew Clift  
 Jonathan Cooperson  
 Linda Dam  
 Matt Hilton  
 Drew Jennings  
 Gregory Scott Lee  
 Erin Michiko Nakagawa  
 Viet Nguyen  
 Felipe Pounds  
 Edgar Rosales  
 Sean Sullivan  
 Jason Wheeler  
 James Peter Wong  
 Senior Vice President Yuji Shibata

**SQUARE ELECTRONIC ARTS L.L.C.**

Customer Support Alaine C. DeLeon  
 Caroline Liu  
 Mark Abarca  
 Anthony Montana  
 Arec Nevers  
 Ryan Riley  
 Marketing Communications Kyoko Yamashita  
 Sonia Im  
 Marketing Kenji Mimura  
 Keiko Kato  
 Andrew Shiozaki  
 Fernando Bustamante  
 Troy Boren  
 Patrick H. Cervantes  
 Andy Hsu  
 Natsu Ishigami  
 Mari Nishikawa  
 Sales Sean Montgomery  
 Ken Berry  
 Senior Vice President and CFO Kenzo Nogimura  
 President Jun Iwasaki

**Special Thanks To:**

Beeline Group, Inc., BradyGAMES, The Kenwood Group,  
 Ruder Finn, Saatchi & Saatchi Los Angeles, Virtual InterActive, Inc.



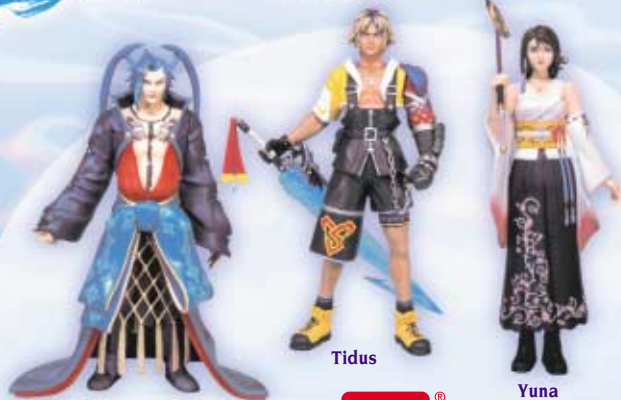
# FINAL FANTASY X

merchandise available from select retailers now!



## FINAL FANTASY<sup>®</sup>X Official Music Soundtrack

Check out the full collection of FINAL FANTASY and Square titles offered by TOKYOPOP<sup>®</sup> Soundtrax at [www.TOKYOPOP.com](http://www.TOKYOPOP.com)



Seymour

Tidus

Yuna

FINAL FANTASY<sup>®</sup>X Action Figures



Bahamut deluxe action figure

Tidus 12" action figure

Auron 12" soft vinyl statue

Yuna 12" soft vinyl statue



Lunch Boxes



Plush Toys



Shirts

plus Action Figures, Posters, Wall Scrolls & more!



## FINAL FANTASY<sup>®</sup>X Official Strategy Guide

available now at [www.bradygames.com](http://www.bradygames.com)



[www.artfx-kotobukiya.com](http://www.artfx-kotobukiya.com)  
[info@artfx-kotobukiya.com](mailto:info@artfx-kotobukiya.com)



Call your local comic book or video game store for availability. To find a comic book store near you, access <http://csls.diamondcomics.com> or call the Comic Shop Locator: 888-366-4358

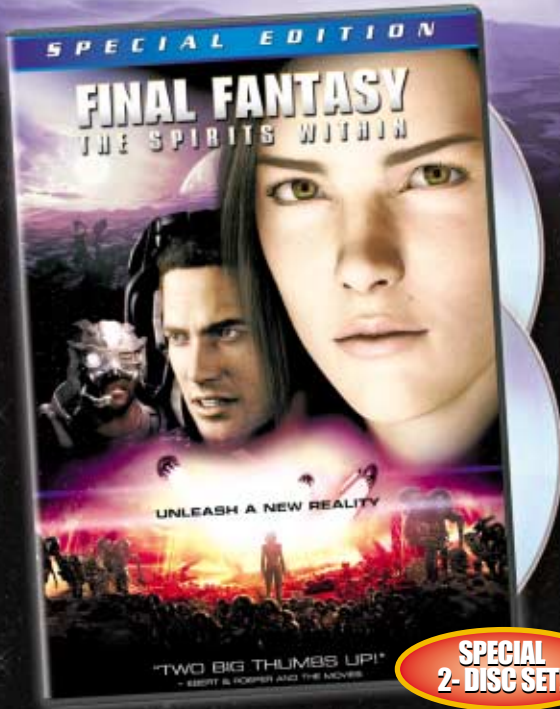


For more FINAL FANTASY<sup>®</sup>X merchandise, go to [www.playonline.com](http://www.playonline.com)

© 2001, 2002 Square Co., Ltd. All rights reserved. FINAL FANTASY and the SQUARESOFT logos are registered trademarks of Square Co., Ltd. Character design: Tetsuya Nomura. Distributed by Bandai America Incorporated. © 2001, 2002 Bandai Co., Ltd. BradyGAMES is a registered trademark of Pearson Education, Inc. TOKYOPOP is a registered trademark and TOKYOPOP Soundtrax is a trademark of Mixx Entertainment, Inc. Artfx and the Artfx logo is a registered trademark and © 2001, 2002 Kotobukiya, Co. Ltd. Some items shown are prototypes and may differ from final products.

# The Action Is Real. The Actors Are Not.

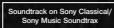
Experience the cutting edge in ultra realistic computer animation!



In the year 2065, the Earth is infested with alien spirits and mankind faces total extinction. The only hope for survival is the courageous and beautiful scientist, Aki Ross, who races to collect the eight spirits and rid the planet of the destructive alien presence.

OWN THE SPECIAL EDITION . RENT IT ON VHS AND .

Columbia Pictures and Square Pictures Present FINAL FANTASY: THE SPIRITS WITHIN



©2001 Columbia Pictures Industries, Inc. All Rights Reserved.

©2001 Layout and Design Columbia TriStar Entertainment. All Rights Reserved.

[www.cthe.com](http://www.cthe.com)

A new reality in DVD loaded with never-before-seen special features:

Interactive Documentary

Alternate Opening Sequence

Joke Outtakes

Film Deconstruction

Commentaries

“Final Fantasy” Thriller

Music Video

And Much, Much More!

From the creators of the Final Fantasy video game franchise





For a period of ninety (90) days from the date of purchase, Square Electronic Arts L.L.C. (SQEA) warrants to the original purchaser of this SQEA software product that the medium on which this computer program is recorded is free from defects in materials and workmanship. SQEA agrees for a period of ninety (90) days from the date of purchase, to either repair or replace, at its option, free of charge, any SQEA software product that does not meet the above warranty, postage paid, with proof of purchase. This warranty is not applicable to normal wear and tear. This warranty shall not be applicable and shall be void if the defect in the SQEA software product has arisen through abuse, unreasonable use, mistreatment or neglect.

**LIMITATIONS** – The above warranty is in lieu of all other warranties, and no other representations or claims of any nature shall be binding on or obligate SQEA. ANY IMPLIED WARRANTIES APPLICABLE TO THIS SOFTWARE PRODUCT, INCLUDING WARRANTIES OF MERCHANTABILITY, COURSE OF DEALING IN TRADE AND FITNESS FOR A PARTICULAR PURPOSE, ARE LIMITED TO THE NINETY (90) DAY PERIOD DESCRIBED ABOVE. IN NO EVENT WILL SQEA BE LIABLE FOR ANY SPECIAL, INCIDENTAL, OR CONSEQUENTIAL DAMAGES RESULTING FROM POSSESSION, USE OR MALFUNCTION OF THIS SQEA SOFTWARE PRODUCT. Some states do not allow limitations as to how long an implied warranty lasts and/or exclusions or limitations of incidental or consequential damages so the above limitations and/or exclusions of liability may not apply to you. This warranty gives you specific rights, and you may also have other rights that vary from state to state.

**NOTICE** – This manual and the software described in this manual are copyrighted. All rights in the manual and the software are reserved. No part of this manual or the described software may be copied, reproduced, translated, or reduced to any electronic medium or machine-readable form without the prior written consent of SQEA. The described software may not be reverse engineered, decompiled or otherwise disassembled.

**RETURNS WITHIN 90 DAY WARRANTY PERIOD** – To replace defective media within the 90-day warranty period, send the defective media, a copy of the original sales receipt, a return address, and a small note describing the difficulties you are experiencing to Electronic Arts Customer Warranty, P.O. Box 9025, Redwood City, CA 94065-9025. If you have warranty questions, you can also contact Customer Warranty at (650) 628-1900, fax (650) 628-5999. Hours of operation: Monday - Friday, 8:30am - 11:45am and 1pm - 4:30pm, Pacific Standard Time.

**RETURNS AFTER WARRANTY** – To replace defective media after the ninety (90) day warranty period has expired, send the original CD or DVD to the Electronic Arts' address above. Enclose a statement of the defect, your name, your return address, and a check or money order for \$15.

**REPLACEMENT MEDIA** – The above provisions apply to any replacement media or software provided by SQEA hereunder, including the above warranties and limitations.

**TECHNICAL SUPPORT** – For technical support questions, you can call (310) 846-0345. Representatives are available Monday-Friday 8am-12pm and 1pm-5pm, Pacific Standard Time.

### SQUARESOFT GAME TIPS

Game Tips are available for all SQUARESOFT PlayStation® game console and PlayStation®2 computer entertainment system titles:

U.S.: **1-800-892-5825** (Major credit card required) \$.99/min. Automated Tips, \$1.35/min. Live Assistance.

Canada: **1-900-451-KLUE** (1-900-451-5583) \$1.50/min. Automated Tips only.

Prices subject to change without notice. Callers under 18 years of age must obtain permission from a parent or guardian before calling. Game tips are available for callers within the U.S. and Canada only. Touch-tone phone required. Live assistance is available for SQUARESOFT titles published on the PlayStation® game console and the PlayStation®2 computer entertainment system only. Game counselors are available Monday-Friday, 8am-12pm and 1pm-5pm, Pacific Standard Time. Automated support is available 24 hours a day, 7 days a week.

For information and services by SQUARESOFT, go to [playonline.com](http://playonline.com)™