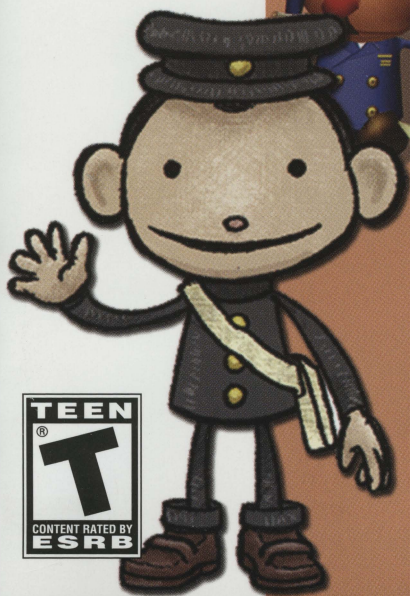


Chu♥lip



NATSUME[®]

Serious Fun[®]

Contents



WARNING: READ BEFORE USING YOUR PLAYSTATION®2 COMPUTER ENTERTAINMENT SYSTEM.

A very small percentage of individuals may experience epileptic seizures when exposed to certain light patterns or flashing lights. Exposure to certain patterns or backgrounds on a television screen or while playing video games, including games played on the PlayStation®2 console, may induce an epileptic seizure in these individuals. Certain conditions may induce previously undetected epileptic symptoms even in persons who have no history of prior seizures or epilepsy. If you, or anyone in your family, has an epileptic condition, consult your physician prior to playing. If you experience any of the following symptoms while playing a video game - dizziness, altered vision, eye or muscle twitches, loss of awareness, disorientation, any involuntary movement, or convulsions - IMMEDIATELY discontinue use and consult your physician before resuming play.

WARNING TO OWNERS OF PROJECTION TELEVISIONS:

Do not connect your PlayStation®2 console to a projection TV without first consulting the user manual for your projection TV, unless it is of the LCD type. Otherwise, it may permanently damage your TV screen.

USE OF UNAUTHORIZED PRODUCT:

The use of software or peripherals not authorized by Sony Computer Entertainment America may damage your console and/or invalidate your warranty. Only official or licensed peripherals should be used in the controller ports or memory card slots.

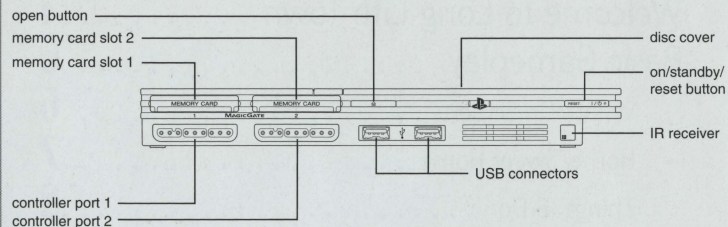
HANDLING YOUR PlayStation®2 FORMAT DISC:

- This disc is intended for use only with PlayStation®2 consoles with the NTSC U/C designation.
- Do not bend it, crush it or submerge it in liquids.
- Do not leave it in direct sunlight or near a radiator or other source of heat.
- Be sure to take an occasional rest break during extended play.
- Keep this compact disc clean. Always hold the disc by the edges and keep it in its protective case when not in use. Clean the disc with a lint-free, soft, dry cloth, wiping in straight lines from center to outer edge. Never use solvents or abrasive cleaners.

Natsume and Serious Fun are registered trademarks of Natsume Inc. Chulip is a trademark of Marvelous Interactive Inc./Punchline. ©2006 Natsume Inc. ©2006 Marvelous Interactive Inc. ©2002 Punchline All Rights Reserved.

System Setup	2
Game Controls	3
Welcome to Long Life Town	4
Basic Gameplay	6
What's On Screen?	6
Home, Sweet Home	7
Things to Do	8
People to See	9
Smooching for Success	10
Play Smart!	11
Your Guide to Long Life Town SPOILERS!	12
Prelude	12
Long Life Train Rock Incident	13
Letter Set Incident Part I: Ancestor's Wooden Gong	14
Letter Set Incident Part II: Funny Bone Factory President	15
Letter Set Incident Part III: Communicate with the Aliens	16
Your Final Test	17
Pucker Up, Big Guy!	18
Underground Residents	21
Maps	24

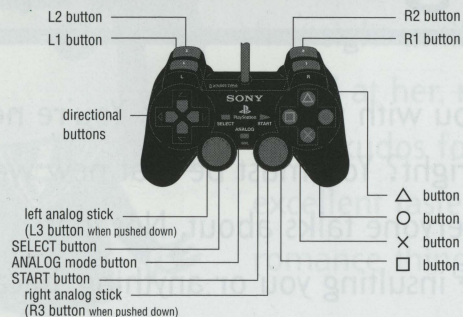
System Setup



Set up your PlayStation®2 computer entertainment system according to the instructions supplied with your system. Check that the system is turned on (the on/standby indicator is green). Press the OPEN button to open the disc cover. Place the **Chulip** disc with the label side facing up in the disc holder, and then close the disc cover. Attach game controllers and other peripherals as appropriate. Follow the on-screen instructions and refer to this manual for information on using the software.

Game Controls

DUALSHOCK®2 ANALOG CONTROLLER CONFIGURATIONS



△ Button	Kiss Characters Confirms Menu Selections
○ Button	Cancels Actions Makes Character Run (When You Gain the Ability)
× Button	Talks to Characters Confirms Menu Selections Action
□ Button	Pulls Up Inventory Menu
L1 Button	Not Used
L2 Button	Not Used
R1 Button	Not Used
R2 Button	Not Used
Directional Buttons	Scrolls through Menu Selections
Left Analog Stick	Moves Character Scrolls through Menu Selections
Right Analog Stick	Not Used
START Button	Not Used
SELECT Button	Not Used

Welcome to Long Life Town

Hey! You with the funny hat. You're new here, right? You must be that new weird kid everyone talks about. Not that they're insulting you or anything, because nobody in Long Life Town is normal. So what's up with your starry-eyed expression, kid?



Dan Yamada

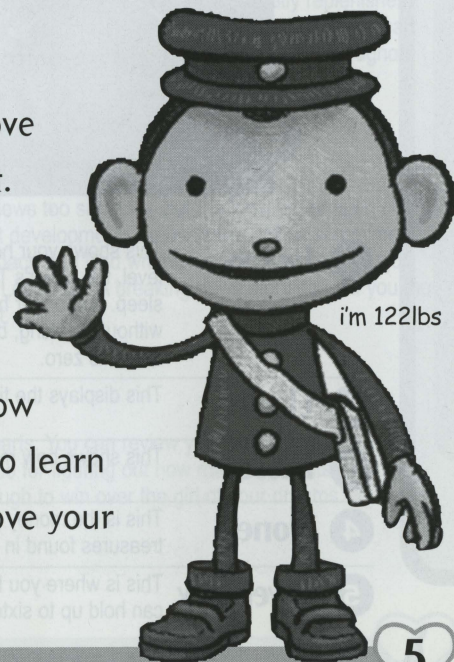


she's 14

Oh her! She's Julie and Goro's girl. You probably didn't believe in love at first sight until you gazed at her, right? Well, kudos for your excellent taste, but this romance thing isn't easy.

That's because true love comes from the heart. And it takes a strong heart to win the girl of your dreams.

Before you tell her how you feel, you'll need to learn about love and improve your reputation, kid!

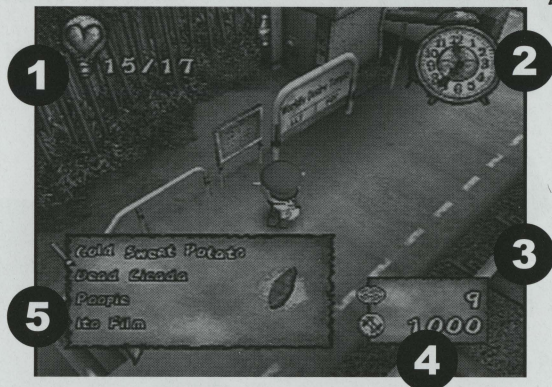


i'm 122lbs

Basic Gameplay

What's so hard about kissing? Well, kissing the wrong person at the wrong time can be heartbreaking! Lick your lips and read on!

What's on the Screen? the chicken crows at 4 o'clock



- 1 Hearts** This shows your heart strength. Whenever you gain a level, the Lover's Tree will strengthen your heart as you sleep. A stronger heart can withstand bigger shocks without breaking, but the game will end when your heart total hits zero.
- 2 Clock** This displays the time of day.
- 3 Kisses** This shows how many people you kissed.
- 4 Money** This is the money earned through kissing or selling treasures found in the garbage cans.
- 5 Inventory** This is where you keep treasures and other items. You can hold up to sixteen items.

Home, Sweet Home

It might be ever so humble, but your house is the most important place in the entire game. That's because this is the place to be for recovering strength, learning new information and saving your game progress.

Saving Your Progress

The bathroom in your house is where you need go to save your game. It's important to save often so you don't have to repeat difficult tasks. As you explore and kiss underground residents, you'll unlock restroom save points in other distant places.

Sleeping

New kids need to know the rules and the biggest one is the curfew in Long Life Town. Mr. Policeman tends to shoot potential hoodlums on sight, so it's a good idea to call it a night at sundown. Your father reviews your progress with Lover's Tree while you sleep. Even if you don't accomplish anything for the day, sleeping automatically replenishes your heart strength. If you earn enough kisses, Lover's Tree will strengthen your heart so you can take on bigger kissable challenges around Long Life Town and throughout the surrounding countryside.

In the News

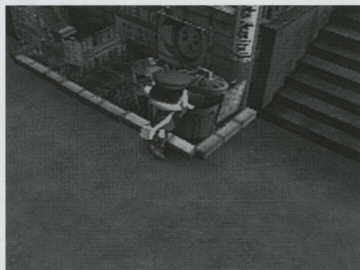
Perhaps Dad takes reading the daily news too seriously, but the local paper is an important source for learning the latest developments around town. While sometimes the news rehashes old stories, check back with Dad whenever you complete a major task or recover an item from the Love Letter Set. A breaking news story can tell you the who, what, when and where to go next.

The Photo Album

Locking lips isn't just about earning hearts. You can review your kissing conquests in the photo album. This is a fun reference for figuring out how many residents you need to kiss before your heart is strong enough to win over the girl of your dreams.

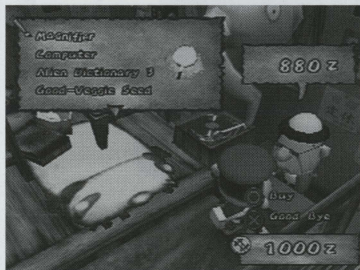
Things to Do...

One citizen's garbage is a resourceful romantic's treasure. So if you're not smooching, you should be checking out the trashcans and other hidden places. Everything that you find has a price that Mr. Cheapot will pay.



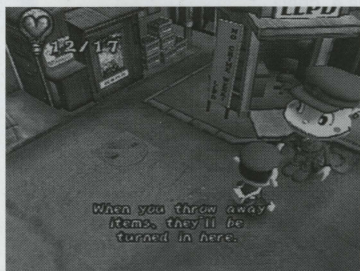
Seek and Ye Shall Find

While Michelle insists on keeping the streets clean around town, you can still find hidden treasures behind bushes and inside garbage cans. It's important to make a habit of scrounging for stuff because how fast you solve game quests can depend on your purchasing power. Discarded Frying Pans offer excellent resale value.



Buy & Sell

Whenever your inventory is full, see Mr. Cheapot during his shop hours and sell off the items that you don't need (including the smelly, heartbreaking stuff). Mr. Cheapot also sells important merchandise that you'll need to solve quests later in the game, so it's important to browse through his stock if you're feeling stumped.

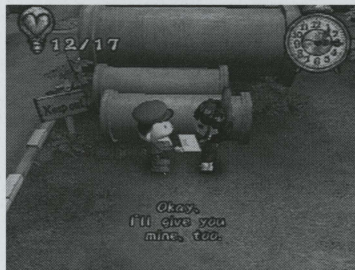


Did You Lose Something?

Sometimes you find an item that you think is junk, but later you realize that you need it. This is especially true of rare and valuable items like the refrigerator (the alien needs it to get home). So if you discard an item, see Mr. Policeman at the Lost and Found. If you sell it, keep looking around until it appears again.

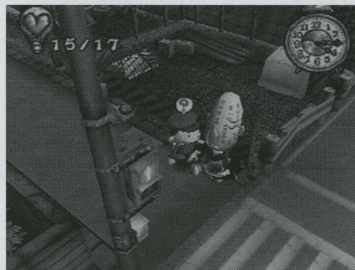
People to See

The quickest way to improve your reputation and impress the girl of your dreams is by helping out the residents who live above and below the surface in Long Life Town. The trick is knowing where and when to find them.



Interacting with Residents

That card in your inventory is the ticket to introducing yourself to everyone in Long Life Town. Check back with these people because they may have new things to say after you complete certain tasks. Keep in mind that everyone speaks from different perspectives, so sometimes you need to distinguish facts from idle gossip.



Schedules to Keep

Some residents above and below ground might have people to see, but everyone has a schedule to keep, so observe closely and you'll know where certain people hang out throughout the day or evening. This makes it easy for you to know where to go to find a person, although some dramatic events can change their daily routine.

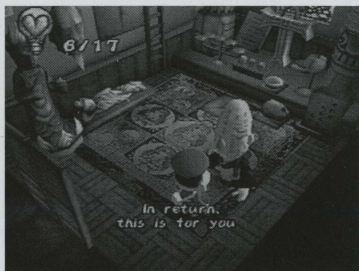


Underground Residents

Look around and you'll probably spot unusual cracks in the ground. If you peer into a crack you might spot a mysterious underground resident. These strange folks pop up to the surface at certain times of the day, but if you watch and read closely, you'll learn a secret or two about how to win them over with a smooch.

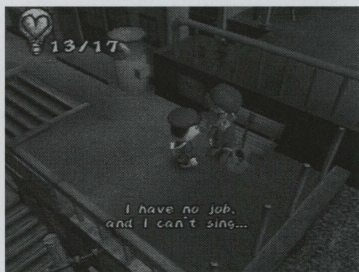
Smooching for Success

You don't have to kiss up to learn to smooch right—but like real life, smooching success depends on knowing when the exact moment arrives to plant a big wet one on someone's smacker. Check this out before you pucker up:



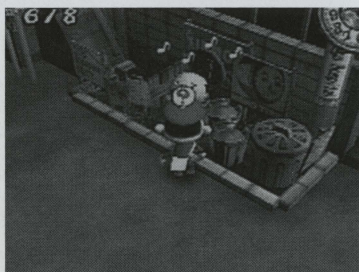
Earn Cred with a Rep

Before kissing the girl of your dreams in the shade of Lover's Tree, you must build your confidence and establish an impressive local reputation. In Chulip, that means you must smooch with everyone and everything that lets you kiss them, but it's not that simple. Like real life, the only good kiss is a smooch that someone wants.



Good Deeds Lead to Romance

You can kiss the people who live above ground, but only after helping them or impressing them by accomplishing a difficult task. Talk to these people frequently and you'll learn hints that can help you figure out a way to earn a smooch. If that doesn't work or you're still stuck, read the pucker up secrets on page 18.



Timing is Everything

Reclusive underground residents emerge at certain times of the day, but they'll only let you kiss them when they're ready (wait for swirling musical notes around their heads and you'll avoid heartache). Sometimes you need to sneak or surprise an underground resident to earn a kiss, but don't experiment without a strong heart.

Play Smart!



Ready to pucker up, smoochie-poo? Avoid potential heartbreak and check out these helpful and important game tips first:

Keep Your Strength Up

If your heart strength is low, it's time to go home and rest up. Washing up in a restroom might restore a few hearts, but there's nothing better than a good night's sleep. Missing a kiss with a weak heart can reduce your strength to zero and you'll have to start from the last place where you saved. Before venturing out to rummage through dumpster bins or track down an elusive or tricky underground resident, it's a good idea to rest and save your game at home.

Exchange Cards and Meet People

Some players never realize how important it is to show your card to other residents until it's time to take on the game's final test. Talk to everyone and share your card and others' cards – it's the way to uncover answers to tricky quiz questions.

Save Your Money

Growing up in Long Life Town is expensive, especially if you're taking the daily train to a factory or a field. That's why it's important to frequently check garbage cans for discarded treasures and plan multiple tasks at your destinations. Kissing underground residents can earn you cash, but it's never enough.

Watch the Time

You must maintain a schedule to track down and kiss most underground residents, but at night Mr. Policeman and Dr. Dandy won't take kindly to roaming Romeos. Plan your day out in advance. Remember that the trains run on schedules and businesses won't sell anything after closing time. Creating a timely game plan saves you the hassles of starting over from your last saved point.

Plan Multiple Tasks Before Catching the Train

Riding the rails adds up, so it's important to either plan your trips in advance or splurge on a rail pass. If you're not in a hurry, earning extra cash for a pass eliminates the hassles of nickel-and-diming your spending money.

Your Guide to Long Life Town

The path to true love is neither straight nor easy, but you can avoid confusing detours with this helpful mini guide.

Prelude

You have only one chance to make an impression on the love of your life, so you need to strengthen your heart and know exactly what to say. Talk to your father at home and consider writing down your feelings on paper. Visit Mr. Cheapot and recover the Letter Set to write a Love Letter. If you try to mail your letter from the mailbox near the train station, Mr. Suzuki will give you helpful tips for adding extra elegance to your prose. Falling in love isn't easy—you'll learn this the hard way when you wake up in the morning.

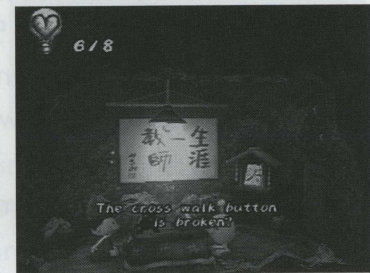
The kiss-and-tell secrets:

- Try to kiss the girl. She will slap you, but it's the only way to learn about love.
- Sneak slowly and silently past the angry dog and you can grab that letter set.
- Depending on what you do, you'll find that you can open the loose manhole cover near your house and visit Mr. Suzuki.
- Mr. Suzuki offers more advice later, so it's important to revisit him in his deep digs.

Long Life Train Co. Rock Incident

Uh oh. You're on track for big trouble with the Long Life Train Company. Someone rocked the town and left a large boulder on the tracks. Now the trains can't complete their appointed rounds. To make matters worse, rock-solid police evidence puts the blame squarely in the lap of the new kid in town: That's you. You'll need to clean the tracks to clear your name, so take a walk over to Undasura Park after you have Mr. Suzuki fix that dangerous traffic light.

Listen in on the argument between Mr. Suzuki and Mr. Yamada. Keep the lively conversation rolling by tracking down Mr. Yamada on the road leading to Lover's Tree. That's all the way on the other side of town. As you make your way back to the train station you'll see the two school officials fighting again. Mr. Yamada will take care of the blocked tracks, but a few new complications make it clear that your challenges are far from over.

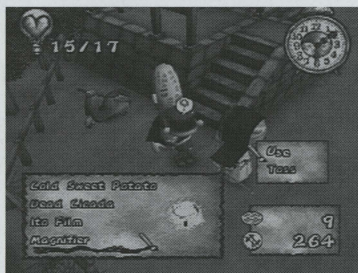


The kiss-and-tell secrets:

- Mr. Suzuki won't bother fixing the traffic light unless you verify that it's broken.
- Open those waste bins and dig for treasure! You can't start saving money soon enough!
- It's time to spy on the underground residents. Don't be afraid to pucker up!

Letter Set Incident Part I: Ancestor's Wooden Gong

After clearing the boulder from the train tracks you probably thought your troubles were derailed, but according to the newspaper you're the leading suspect in the complicated Love Letter Set robbery. Ride the train out to the Worldly Desire Temple and talk to Mr. Inoue about the Love Ink. He'll sign the Love Ink over to you if you recover the sacred Ancestor's Wooden Gong. Climb the steps up to the temple and fork over a 500G donation to make Monk Hoichi chatty during the evening hours. It gets more expensive. Return to Long Life Town, give him another donation in the morning (near the park) and he'll give you some Incense. To use the Incense properly, you need to buy a Magnifying Glass from Mr. Cheapot and read the fine print on Monk Hoichi's head.



Light the Incense in the order written to release the Wooden Gong (you can find the exact family grave order on page 20).

The kiss-and-tell secrets:

- If you rise early and catch the morning train to Worldly Desire Temple, you might be able to kiss Agony Man on your way to the temple. This gives you time to search the graveyard until Monk Hoichi comes home.
- The temple graveyard is dangerous at night. Always be ready to run from trouble.
- This part of the game is expensive but the next chapter has a higher price, so search trashcans and start saving your funds.

Letter Set Incident Part II: Funny Bone Factory President

Mr. Saito would love to give you the Love Paper, but only if you're the President of Funny Bone Factory. This trip up the corporate ladder has a few big steps. Pick up the Classified Ad from the factory chief in the morning and take it to Batayan. You'll receive a One Day Manager Pass in the mail that is good for a free factory tour. Talk to the employees and get a letter for Scarecrow. Deliver the correspondence to Scarecrow and he'll write a diary entry containing the factory safe combination. Seek out the lazy factory security guard and then find a place to hide in the factory until closing time. Now program the factory train to reach the safe (see the notes below) and you'll find the Boss Card. Show it to Mr. Saito outside the factory and he'll give you the Love Paper.

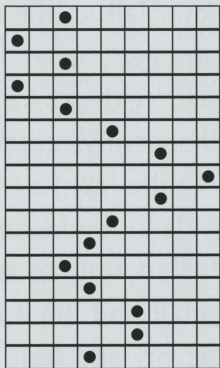


The kiss-and-tell secrets:

- The only way to catch the tour at Funny Bone Factory is by riding the earliest train out of Long Life Town in the morning. Set your alarm clock.
- You can save some hearts during your morning exercises by pressing X, Δ, O, X at the start of each routine. Listen closely to the music and you can stay in synch with the workers.
- Look for the employee who complains about the lazy guard--he's the only guard who won't find your hiding place.
- Favorite hiding places include empty barrels and metal storage containers.
- To reach the safe, know how to program the right train stops: 123, 321, 444 and 564.

Letter Set Incident Part III: Communicate with the Aliens

Things grow complicated, so note what you have done and what you still need to do. Visit Ms. Iwata at Scarecrow Field to learn about the Love Pen. If you look through the girl's telescope in the empty lot at night, you'll see a UFO crash. This might be proof of extraterrestrials but it's not enough for Ms. Iwata. Communicate with the alien by collecting four Alien Dictionaries (see the details at the bottom of this page). Use the dictionaries at Monkey Rock to learn what the alien needs to call home (again, read the stuff at the bottom of this page). Buy and plant Star Seeds in the field near the vegetable stand to unravel the mysterious alien code that you enter in the communication device--but carry a can of Funny Cola. Input the Star Seed field pattern correctly and you'll broadcast an alien distress signal.



(Pucker up for a kiss!) Recount your otherworldly tale to Ms. Iwata and she'll give you the Love Pen.

The kiss-and-tell secrets:

- The locations for the four alien dictionaries: 1 - Kiss Mr. Frog near the pond at Worldly Desire Temple. 2 - Kiss Jigsaw (this one is a tough one) inside Funny Bone Factory by finding the piece that completes his face. 3 - Buy it from Mr. Cheapot. 4 - Chew Micro Gum at the hole behind the Snack Shop when you hear the clock chime at 5 PM.
- Find Frying Pans inside the garbage cans near Mr. Cheapot's Shop.
- Look for rare Refrigerators in the Scarecrow Field dump (near the crashed UFO).
- Buy the Computer from Mr. Cheapot.

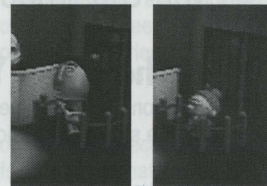
The Final Challenge

You're almost done. Return the Love Letter Set to Mr. Suzuki and write a good love letter. You can't mail a good love letter just any place--it has to be sent from the heart--so walk to Undasura Park and take a tumble down the large hole.



Inside this dark place you'll need to find Goro's real head and place it on his body. It's not hard if you pay close attention to small details.

Now you have to defend Julie in chicken court. Few people actually like Julie's cooking, so focus on finding the few witnesses (exactly two) who can testify on her behalf. This case might require a few appeals to earn a happy verdict in Julie's favor.



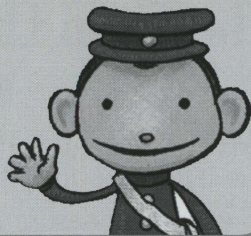
Yikes! A large cat blocks the final door. You must correctly answer 20 challenging questions about the game. Check out these map pages for important trivia and pay attention--each wrong answer will cost you 20 hearts! If you flunk out and have to restart, write down the answers to help you remember when you retake the test.

After you successfully answer all 20 questions you can drop your love letter in the mail.

The kiss-and-tell secrets:

- Sometimes Goro's correct head is the first one that speaks, but after a few tries you'll recognize him at a glance.
- Let Michelle and Ms. Plum testify for Julie and dismiss the other witnesses.
- It helps to write down the questions and the correct answers for the final quiz. You'll know most of the answers if you exchange cards with people around town.

Pucker up, Big Guy!



In addition to the underground residents, there are more than eighteen other people you can smooch. Here's how:

The Girl of Your Dreams

Dream on, lover boy--the only way you're going to kiss her beneath Lover's Tree is with a strong heart and a great love letter.

Dr. Dandy

Wait until the evil Dr. Dandy is wandering around at night, then sneak into the hospital and use his machine to concoct a Heart Potion containing a frog, dead cicada and a popsicle. If you're stuck, Batayan knows all about cicadas and Leo or Mrs. Plum can tell you about frogs. Talk to Dr. Dandy and let him take your blood before giving him the Heart Potion.

Mr. Cheapot *Julie's biggest fan*

Sneak into Mr. Cheapot's shop while Rocky the dog is snoozing outside. Old Mr. Cheapot will tell you a tale about a mysterious Golden Raccoon and give you a Crane Feather. Take the feather to Leo's empty Tea Room and kick the furnace seven times to open it. Climb up the chimney and take the Golden Raccoon from the crane's nest. Return the raccoon to Mr. Cheapot.

Batayan *30 years old*

We're happiest when we're doing what we love to do, but Batayan learns this the hard way. Give him the hiring flyer from the Funny Bone Factory Chief and you'll receive a One Day Manager Pass in the mail. Use the pass and take the tour at the factory and get Scarecrow's letter. Take the letter to Scarecrow to learn the factory safe combination. Get the Boss Card from the safe and fire Batayan before the day job drudgery wears him down.

Michelle *she likes the midnight movies*

If you sneak around Michelle's yard at night you'll find a buried pot. Dig it up and you'll learn that her favorite food is eggplant. Buy Good Veggie Seeds from Mr. Cheapot and plant the seeds near the Scarecrow Field vegetable stand. Visit Michelle after 10 PM with an eggplant and dodge her pots and pans until she relents and gives you a kiss. Look for the 300G outside her back window, too!

Mrs. Plum *128!!!*

Wait for the breaking news from Dad that the Snack Shop closed. Visit Mrs. Plum and you'll find that she can't utter a word. It's up to you to kiss Dr. Fill (an underground resident--see page 22) and return Mrs. Plum's dentures.

Policeman *has a disease*

Nothing makes Mr. Policeman's day more than a big arrest. That's why you need to earn three crime stamps for a smooch. Buy Tobacco from the newsstand and smoke in front of him. Now sneak out of Turtle Bath without your clothes and go see him. Finally, kiss Tip Toe Thief IV to earn Julie's hairpin, and show it your Officer Unfriendly.

Goro *50*

Show Leo a film can... Goro will tell you which old films you need to collect to earn his kiss. Cheapot and the underground residents are film buffs who have what you need.

Julie

You'll need to work on kissing Bell before you can kiss Julie. Take Bell's Wine Coupon to Julie after midnight and watch the fight between her and Goro. Once Goro is arrested you need to be arrested, too. Rescue Goro with this lock combination, but remember to press the solid buttons only when the controller vibrates: Δ , \blacktriangle , \circ , \square , \times , \blacksquare , \times

Leo *likes to brush his teeth 1st thing*

Kissing Leo can be complicated unless you know how to bathe properly. Use the faucets in this order: Right faucet, left faucet, right faucet, left faucet. Now step up and balance on the bucket before getting into the tub. Sit in the tub and wait for your eyes to pop open, then step out and go find Leo.

Conductor

Unlike Leo, this guy is easy to smooch. All you have to do is ride a train to all four stations: The Worldly Desire Temple, Funny Bone City, Scarecrow Field and Long Life Town.

Monk Hoichi

Do you feel charitable? Save up your cash and donate 500G at the temple donation box to talk to Hoichi. Now give him another donation in Long Life Town (near the park) to receive Incense. To get the Wooden Gong and a kiss, light the Incense at the graves in this order: Takeda, Mouri, Uesugi, Oda, Toyotomi and Tokugawa.

Bell

Once you have a kiss from Monk Hoichi, go ahead and ring the bell at the temple. Now you did it! Hoichi falls ill and Bell must find a cure! Get the Wine Coupon from Bell and give it to Julie. Julie gives you Sweet Potato Wine. Show the wine to Bell and she'll take you to Charcoal's cave where you'll witness an epic battle. Bell plants one on your lips, but you're far from done here. Keep reading.

Charcoal

Helping Bell defeat Charcoal was only half the battle. After Bell fails to break the curse, return to Charcoal's cave and investigate his remains. Now defeat him in a final fight to receive a kiss and a second sword that severs Hoichi's curse.

Miss Zombie Mika

Ready to brew up a true love story? After kissing Leo and Voodoo Doll, touch the flying soul at night to meet Mika. Drink her tea three times to earn an eyeball, four times to get Mamaryllis. Take the Wilting Flower, Fresh Mint, La-Lavender and Cluster Mamaryllis to Leo and drink tea with him, then return to Mika with the eyeball.

Scarecrow

Enjoy a morning workout at the Funny Bone Factory and talk to the employees. One will give you a letter for Scarecrow. Give Scarecrow the letter and he'll give you a kiss. Later you can read Scarecrow's diary in his room and discover a secret combination!

Alien

Talk to Ms. Iwata and look through the telescope in the empty lot at night. Hark! What light through yonder sky breaks? Is it the envious moon? No Romeo, it's an alien crash-landing! Follow the Love Letter Set Incident III steps to save him.

Factory Worker

You need the Boss Card from the Funny Bone Factory to fire this guy's passion. Return to the factory building site and fire the worker who supervises the bulldozer operator. Now fire the bulldozer operator and he'll be so elated that he kisses you.

Underground Residents



While most moody underground residents might be fairly easy to find, they're among the toughest to smooch. Your kisses require perfect timing at a magical moment.

1 Onion Lady

At Mr. Suzuki's Home
Risk: 1 heart
Moment: Wait until she shows her head.

2 Ms. Thick Glasses

3 Long Life Town in the empty lot
Around 2:00 AM to 3:30 AM
Risk: 3 hearts
Moment: You have a 50% chance after she falls and gets back up.

3 Retired Bucket

3 Long Life Town near Cheapot's place
Around 9:00 AM to 11:15 AM
Risk: 1 heart
Moment: When his head pops up from the bucket.

4 Mr. Apollo

3 Long Life Town in the empty lot
Around 1:00 PM to 2:55 PM
Risk: 1 heart
Moment: When he successfully lands after launch.

5 Champ

3 Long Life Town near Batayan's place
Around 2:00 PM to 3:10 PM
Risk: 1 heart
Moment: Wait for his combination punches near the lamppost.

6 Mr. Music Box

3 Long Life Town near the hospital
Around 5:00 PM to 6:25 PM
Risk: 2 hearts
Moment: When he finishes playing his song.

7 Chuck

3 Long Life Town inside the hospital.
Around 7:30 PM to 8:30 PM
Risk: 4 hearts
Moment: Stay away until he pauses in front of the poster.

8 Yodzilla

Undasura Park near the trash can
Around 4:00 PM to 5:00 PM
Risk: 7 hearts
Moment: Sneak up on him as he wanders around.

9 Chopper *spin for her!*

Undasura Park near the bench
Around 4:00 AM to 6:00 AM
Risk: 8 (+12) hearts
Moment: Spin on the globe in the park when Chopper appears and lose 12 hearts on the ride.

10 Jamtrack 415

Undasura Park near the swings
Around 12:15 PM to 2:00 PM
Risk: 8 hearts
Moment: Lead him to these stations in this order: Shinkobe, Shinosaka, Kyoto, Nagoya, Shinyokohama, Tokyo.

11 Dr. Fill

9 Long Life Town near Turtle Bath
Around 12:00 AM to 1:30 AM
Risk: 4 hearts
Moment: Wait until Mrs. Plum loses her dentures and then kiss Dr. Fill as he jumps and lands.

12 Pinch Poncho

9 Long Life Town near Tea Room
Around 2:00 AM to 5:00 AM
Risk: 4 hearts
Moment: Play "Red Light/Green Light" and walk toward him when he turns his back.

13 Tin Signboard

9 Long Life Town near the Snack Shop
Around 7:15 AM to 9:50 AM
Risk: 3 hearts
Moment: When he turns to run away. You'll have a better chance after several attempts.

14 Thief Tip Toe IV

9 Long Life Town alley near Julie's place
Around 8:00 AM to 11:00 AM
Risk: 3 hearts
Moment: After you work on kissing Julie. He'll get his loot bag stuck in the alley.

15 Turtle Boy

9 Long Life Town inside the Tea Room
Around 9:00 PM to 10:30 PM
Risk: 15 hearts
Moment: You have a 50% chance after leaving Turtle Bath--but don't wear your clothes.

16 Eucalyptuski

9 Long Life Town near Michelle's House
Around 12:00 PM to 1:30 PM
Risk: 4 (+16) hearts
Moment: Jump off the springboard near Michelle's House and lose 16 hearts after falling into the empty lot.

17 Voodoo Doll

Worldly Desire Temple Graveyard
Around 2:00 AM to 3:00 AM
Risk: 10 hearts
Moment: Try to kiss him while he circles the tree.

18 Snobby Tengu

Worldly Desire Temple Graveyard
Around 6:00 AM to 8:00 AM
Risk: 7 hearts
Moment: Wait for him to fall when he jumps over tombstones.

19 Agony Man

Worldly Desire Temple Graveyard
Around 10:00 AM to 12:00 PM
Risk: 5 hearts
Moment: Wait until he opens his arms. He'll open the restroom for you here.

Hasty Wizard

Walk behind Worldly Desire Temple and near the pond.
Around 3:00 PM to 7:50 PM
Risk: 10 hearts
Moment: Wait for him to stumble and fall near the top of the trail.

Mr. Frog

Walk behind Worldly Desire Temple and down to the pond.
Around 4:30 PM to 5:30 PM
Risk: 8 hearts
Moment: When he lands near the hole.

Eggplant Boy

Next to Worldly Desire Temple
Around 8:00 PM to 9:30 PM
Risk: 10 hearts
Moment: Eat a good eggplant while standing near him.

20 20-Year-Old Guy

Scarecrow Field
Around 9:00 AM to 4:00 PM
Risk: 10 hearts
Moment: Walk away until he's angry, then sneak past him. Repeat this 50 times over several days.

21 Sniper

Scarecrow Field
Around 9:30 AM to 1:30 PM
Risk: 20 hearts
Moment: Wait for him to sneak into his sniper nest, then silently approach him.

22 Target

Scarecrow Field near the train station
Around 11:00 AM to 1:00 PM
Risk: 15 hearts
Moment: Kiss Sniper first. He takes a break outside the restroom. If you kiss him, you can save inside the restroom.

23 Man Spider

Scarecrow Field near Monkey Rock
Around 3:00 PM to 5:00 PM
Risk: 13 hearts
Moment: You have a 50% chance for success after he spins.

24 Miss Clam

Scarecrow Field near the stream
Around 8:00 PM to 11:00 PM
Risk: 20 hearts
Moment: Wait until she calms, then take her to the outdoor oven and cook her.

Robot-King

Funny Bone Factory
Around 1:00 AM to 3:15 AM
Risk: 20 hearts
Moment: Wait until his eyes flash and his head shakes.

Jigsaw

Funny Bone Factory
Around 2:00 AM to 3:00 AM
Risk: 22 hearts
Moment: Locate the EXACT piece that matches his face. You'll earn Alien Dictionary 2.

Box-Man

Funny Bone Factory
Around 3:45 AM to 4:55 AM
Risk: 20 hearts
Moment: Wait for him by the boxes.

Mecha-Yodzilla

Funny Bone Factory
Around 4:00 AM to 6:00 AM
Risk: 30 hearts
Moment: When he barks.

Ad Balloon

Funny Bone Factory
Around 9:30 AM to 1:30 PM
Risk: 25 hearts
Moment: Wait until she lands. She opens a restroom if you kiss her.

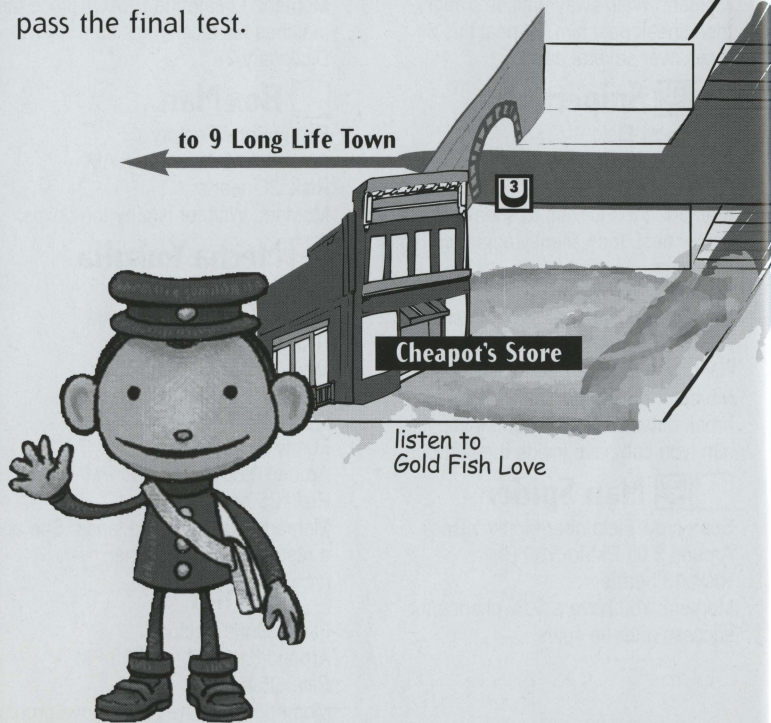
Daniel

Funny Bone Factory
Around 8:00 PM to 11:50 PM
Risk: 25 hearts
Moment: When he pops above ground.

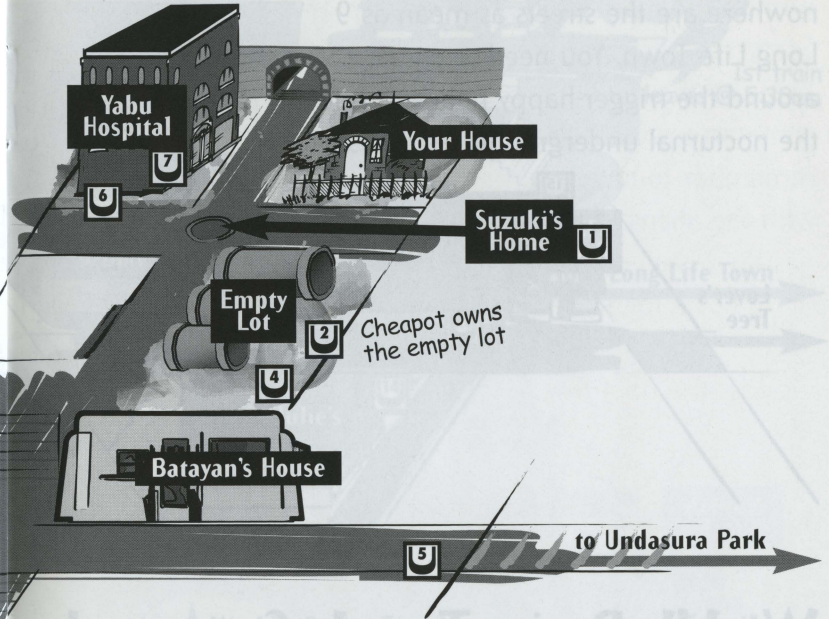
Maps

3 Long Life Town

Before you can ever kiss the girl of your dreams you need to know your way around town like a local. That's why it's important to study the key landmarks on these map pages. The "U" shaped icons with numbers indicate the spots where underground residents hide out. Read up on the trivia. You need to know it to pass the final test.



call 828-8282
if you are hurt



Undasura Park

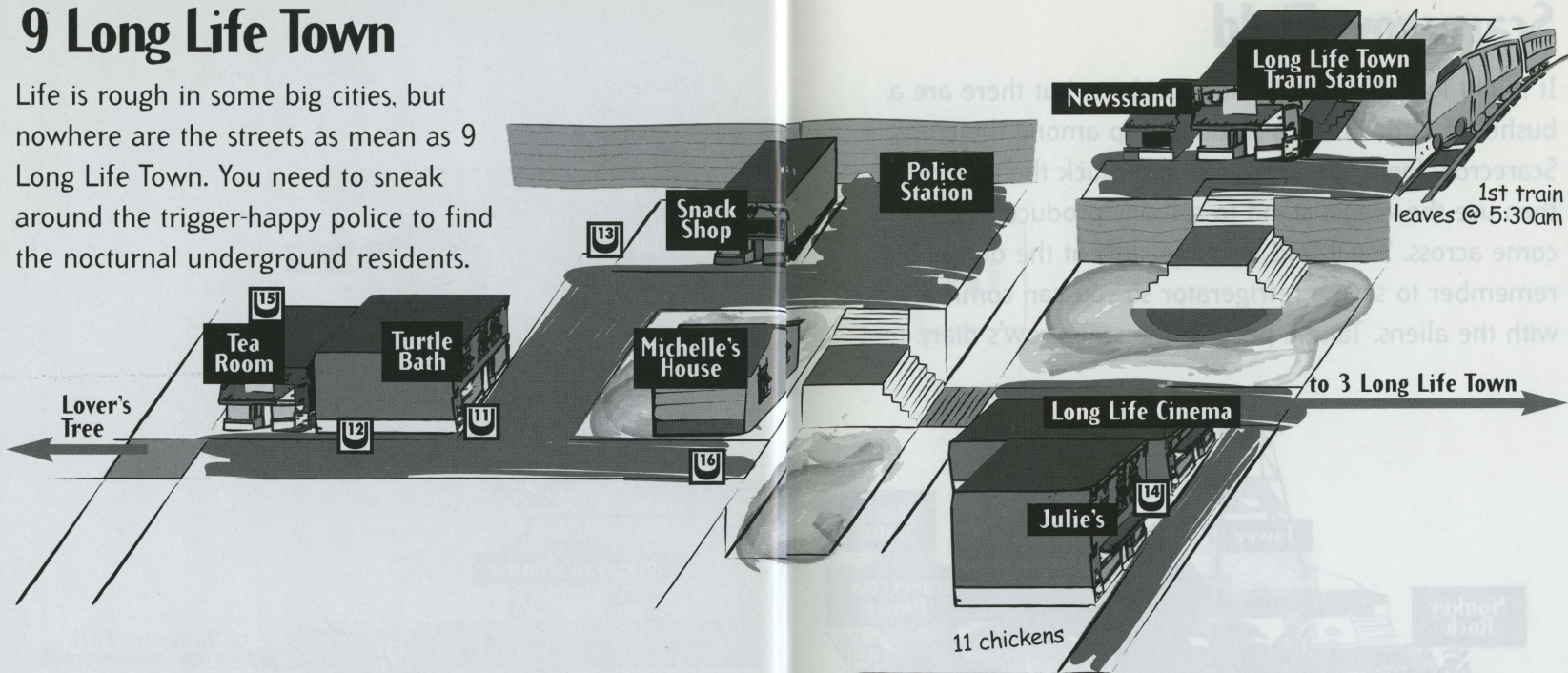
Nobody plays it safe in Undasura Park. Check out Jamtrack's destinations on the playground.

Jamtrack Stations

- A Shin Kobe
- B Shin Osaka
- C Kyoto
- D Nagoya
- E Shin Yokohama
- F Tokyo

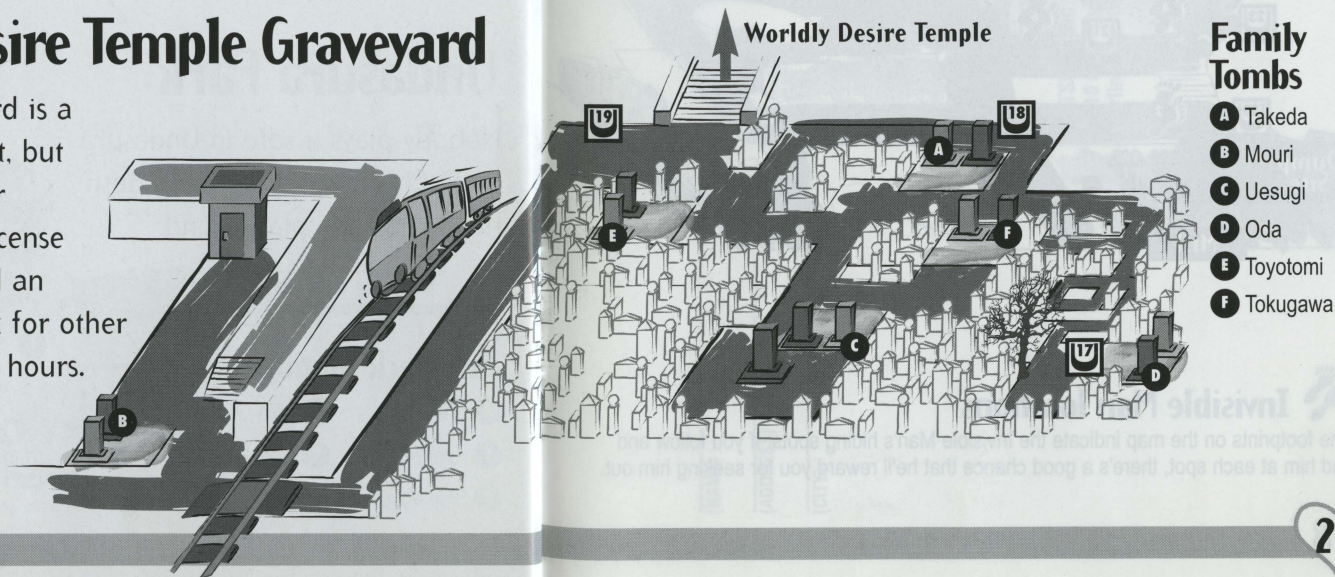
9 Long Life Town

Life is rough in some big cities, but nowhere are the streets as mean as 9 Long Life Town. You need to sneak around the trigger-happy police to find the nocturnal underground residents.



Worldly Desire Temple Graveyard

The Temple Graveyard is a spooky place at night, but you must gather your courage and light Incense at six graves to fulfill an important task. Look for other folks during daylight hours.

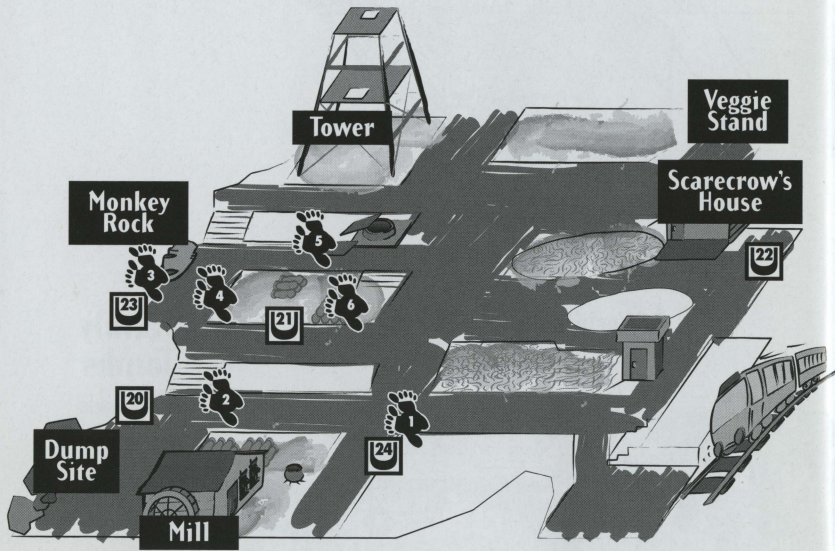


Family Tombs

- A** Takeda
- B** Mouri
- C** Uesugi
- D** Oda
- E** Toyotomi
- F** Tokugawa

Scarecrow Field

It might look flat, plain and mundane, but there are a bushel of opportunities sprouting up among the crops in Scarecrow Field. Look around and pluck the rare plants, then use the veggie stand to sell any produce that you come across. You'll find valuable stuff at the dump, but remember to save a refrigerator so you can communicate with the aliens. Take a peek at the scarecrow's diary, too!



Invisible Man locations

The footprints on the map indicate the Invisible Man's hiding spots. If you follow and find him at each spot, there's a good chance that he'll reward you for seeking him out.

Place
Stamp
Here

NATSUME[®]
Serious Fun[®]

NATSUME INC.
1818 Gilbreth Road, Suite 229
Burlingame, CA 94010

(NAME)

(ADDRESS)

(CITY) _____ TELLTA (ZIP)

WARRANTY INFORMATION

Natsume Inc. warrants to the original purchaser of this Natsume product that this disc is free from defects in materials and workmanship for a period of ninety (90) days from the date of purchase. This Natsume product is sold "as is" without expressed or implied warranty of any kind, and Natsume is not liable for any losses or damages of any kind resulting from the use of this product. If a defect covered by this warranty occurs during this 90-day warranty period, Natsume will repair or replace the disc, at its option, free of charge. Send product postage paid, along with dated proof of purchase, to the address shown below.

This warranty shall not be applicable and shall be void if the defect in the Natsume product has arisen through abuse, unreasonable use, mistreatment or neglect. THIS WARRANTY IS IN LIEU OF ALL OTHER WARRANTIES AND NO OTHER REPRESENTATIONS OR CLAIMS OF ANY NATURE SHALL BE BINDING ON OR OBLIGATE NATSUME. ANY IMPLIED WARRANTIES APPLICABLE TO THIS PRODUCT, INCLUDING WARRANTIES OF MERCHANTABILITY AND FITNESS FOR A PARTICULAR PURPOSE, ARE LIMITED TO THE NINETY (90) DAY PERIOD DESCRIBED ABOVE. IN NO EVENT WILL NATSUME BE LIABLE FOR ANY SPECIAL, INCIDENTAL OR CONSEQUENTIAL DAMAGES RESULTING FROM POSSESSION, USE OR MALFUNCTION OF THIS PRODUCT.

Some states do not allow limitations as to how long an implied warranty lasts and/or exclusions of limitations of incidental or consequential damages, so the above limitations and/or exclusions of liability may not apply to you. This warranty gives you specific rights, and you may also have other rights which vary from state to state.



1818 Gilbreth Road, Suite 229
 Burlingame, CA. 94010
 Phone : (650) 692-1941
 www.natsume.com



Please take the time to fill out the following information to register your game with Natsume® Inc.

Name _____ Age _____ Male Female Phone _____
 Address _____
 City _____ State _____ Zip _____
 Email Address _____ Date of Purchase _____
 Where did you buy this game? _____ How Much Was It? _____
 Is this your first Natsume Game (Yes/No)? _____
 What other Natsume games do you own? _____
 Would you like to see another game in the series (Yes/No)? _____
 How would you rate this game? (1=Poor, 5=Excellent) 1 2 3 4 5
 How would you rate the difficulty? (1=Poor, 5=Excellent) 1 2 3 4 5
 How did you hear about this game?
 Gift Friend Natsume® Website Saw package in store Advertisement
 Read Review Online
 Which magazine do you read often?
 Electronic Gaming Monthly Game Pro Official PlayStation Magazine®
 Game Informer PSM Other _____
 Which website(s) do you visit often?
 IGN.com GameSpy.com Natsume.com
 Gamespot.com Gamefaqs.com Others _____

Place
Stamp
Here

(NAME)

(ADDRESS)

(CITY) _____ TELE (ZIP)



NATSUME INC.
1818 Gilbreth Road, Suite 229
Burlingame, CA 94010



NATSUME[®]

Serious Fun[®]

www.natsume.com

**NATSUME, INC.
1818 GILBRETH ROAD, SUITE 229
BURLINGAME, CA 94010**

(650) 692-1941

Natsume and Serious Fun are registered
trademarks of Natsume Inc.

Chulip is a trademark of
Marvelous Interactive Inc./Punchline.

©2006 Natsume Inc.

©2006 Marvelous Interactive Inc.

©2002 Punchline
All Rights Reserved.